

GENERAL CATALOGUE 2026



**ORAL CARE
FROM ITALY TO THE WORLD**

About US

**CURASEPT IS
A PRIVATELY
OWNED ITALIAN
COMPANY
SPECIALISING IN
ORAL HEALTH.**

Since its foundation, the Company success is based on the innovation that the R&D team ensures in all the Curasept's products.

The first amazing example of this attitude to progress has been, in 2002, the design and development of the **first innovation in the chlorhexidine market since the 1960s: the ANTI-DISCOLORATION SYSTEM (ADS®)** that now is an international patent.

Curasept S.p.A. is a joint stock company, that operates in the oral hygiene sector.

In Italy Curasept sells directly in the dental and through concessionaries in the pharmacy channel being.



**#1 COMPANY IN THE
CHX MARKET**
in pharmacies with
67,5%
of market share in Italy*.

Curasept is present
internationally in more than
48 COUNTRIES
4 CONTINENTS



Scientific Partners

EFP
Partner

SKP

Privileged partner of

SFPIO

Nederlandse Vereniging
voor Parodontologie

nvvp

GSR
FEDERATION SOCIETY OF
PERIODONTOLOGY AND IMPLANTOLOGY

Institutional Partners

ELITE
A EURONEXT COMPANY

CONFINDUSTRIA
Dispositivi Medici

UNIDI
95 Years of Italian Dental Industry

COSMETICA ITALIA
associazione nazionale imprese cosmetiche

SACE

simest
gruppo cdp

THE **ONE AND ONLY**
FIRST
BECAUSE
WE
DON'T STAIN

The **ADS System** dramatically reduces dental pigmentation, the most common side effect linked to Chlorhexidine.

- **Without Alcohol**
- **Without SLS**
- **More than 100 studies**

CURASEPT has further perfected the
A.D.S. (Anti Discoloration System)



CHLORHEXIDINE + ADS|DNA

SODIUM DNA:

What it is:

SODIUM DNA OR PDRN (PolyDeoxyRiboNucleotide) SODIUM SALT, IT IS CONSTITUTED FROM A MIXTURE OF DNA FRAGMENTS WITH MOLECULAR WEIGHT FROM 250 TO 500 KDA.

The mechanism of action of Sodium DNA involves two processes:

1 Interaction with A2a adenosine receptors

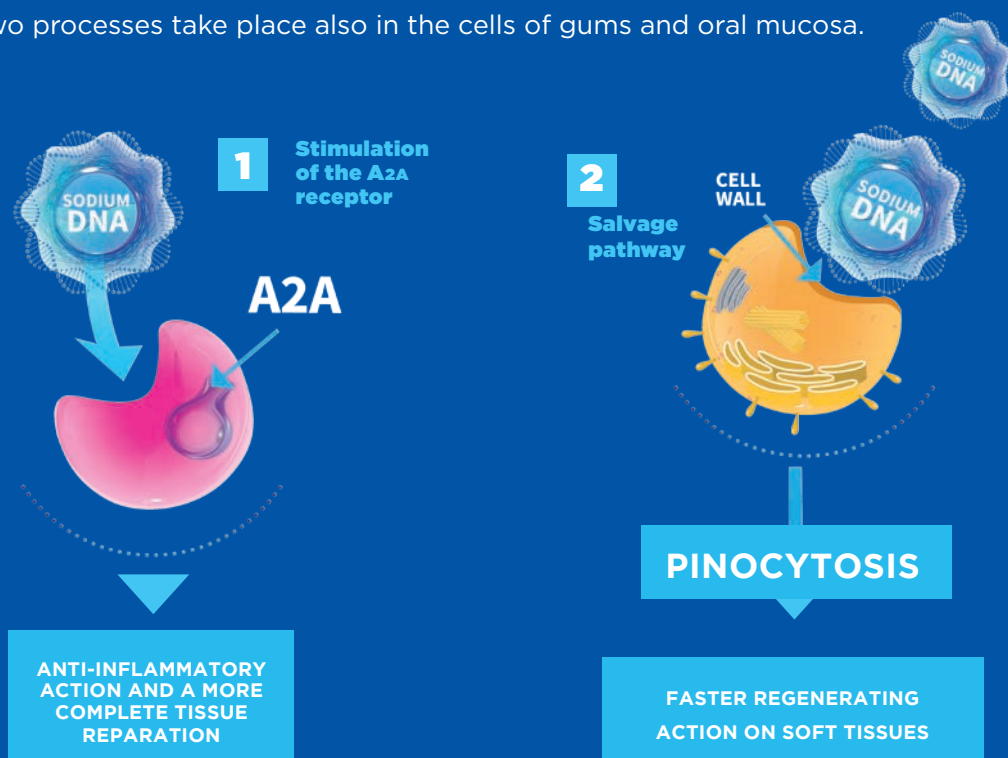
It provides an anti-inflammatory action and modulates multiple cellular inflammatory mediators.

2 “Salvage pathway”

Nucleotide salvage pathways are used to recover bases and nucleosides that are formed during degradation of RNA and DNA. Through this pathway the sodium DNA, through, pinocytosis, is internalized into the cell. Then, these polynucleotides are depolymerized into smaller molecules that enter into the nucleus and are used to synthesize other substances for the cell survival and the support of the regenerative processes.

How it works:

These two processes take place also in the cells of gums and oral mucosa.



**ADS|DNA 220
INTENSIVE TREATMENT**

Mouthwash* - Toothpaste

Chlorhexidine 0.20

+ PVP-VA + DNA



**ADS|DNA 212
PROLONGED TREATMENT**

Mouthwash* - Toothpaste

Chlorhexidine 0.12

+ PVP-VA + DNA



**ADS|DNA 205
PLAQUE AND CARIES
TREATMENT**

Mouthwash - Toothpaste

Chlorhexidine 0.05

+ Fluoride 0.05

+DNA



*Medical Device **C€ 0373**. Read warnings and instructions for use carefully.

CURASEPT ADS | DNA

ALCOHOL-FREE



CURASEPT ADS | DNA 220 MOUTHWASH*

Chlorhexidine digluconate 0.20% with ADS, DNA, PVP-VA

Intensive treatment of gum and mouth inflammation.

CE* 0373

CS-02224 - 200 ml



CURASEPT ADS | DNA 720 GEL TOOTHPASTE

Chlorhexidine digluconate 0.20% with ADS, DNA

Intensive treatment for rapid and effective anti-plaque effect.
Preserves natural teeth whiteness.

CS-02227 - 75 ml



CURASEPT ADS | DNA 212 MOUTHWASH*

Chlorhexidine digluconate 0.12% with ADS, DNA, PVP-VA

Prolonged treatment of gums and mouth inflammation.

CE* 0373

CS-02225 - 200 ml



CURASEPT ADS | DNA 712 GEL TOOTHPASTE

Chlorhexidine digluconate 0.12% with ADS, DNA

Prolonged treatment for rapid and effective anti-plaque and antibacterial effect.
Respects the white colour of teeth.

CS-02231 - 75 ml

CURASEPT ADS | DNA

ALCOHOL-FREE



CURASEPT ADS | DNA 205 MOUTHWASH

Chlorhexidine digluconate 0.05% with ADS, DNA and Fluoride 0.05%

Protects gums and dental enamel for daily treatment.

Ideal for ortho patient.

CS-02226 - 200 ml



CURASEPT ADS | DNA 705 GEL TOOTHPASTE

Chlorhexidine digluconate 0.05% with ADS, DNA and Sodium Fluoride 0.05%

Daily plaque and cavity treatment.

Protects gums preserve the natural teeth whiteness.

CS-02232 - 75 ml

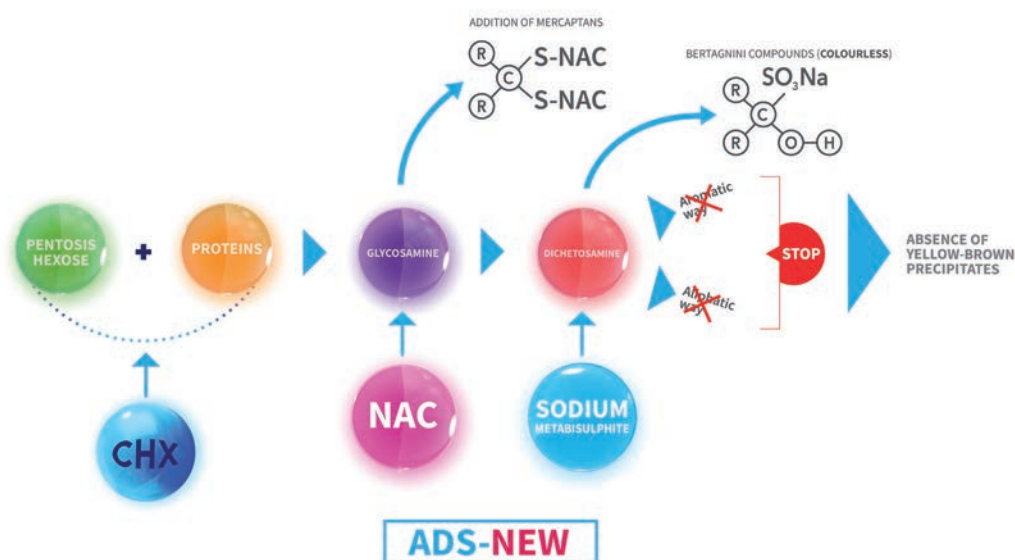
THE NEW ADS SYSTEM HAS BEEN ENHANCED WITH NAC (N-ACETYLCYCSTEINE)

MAILLARD REACTION INTERRUPTED BY THE INTERVENTION OF THE NEW ADS SYSTEM.

With Sodium Metabisulphite and NAC, the **NEW ADS System interrupts the Maillard reaction** that occurs in the acquired dental film, between glycoproteins and sugars.

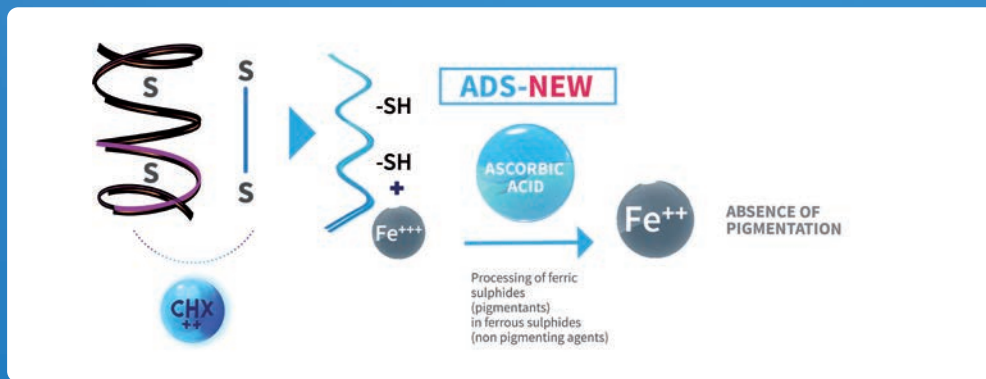
If not interrupted, this reaction leads to the formation of melanoidins, i.e. yellow/brown precipitates that pigment the dental surfaces.

MAILLARD REACTION INTERRUPTED WITH INTERVENTION WITH THE NEW ADS SYSTEM



DENATURATION REACTION INTERRUPTED WITH THE INTERVENTION OF THE ADS NEW SYSTEM

The second reaction that can cause pigmentation is Protein Denaturation. In this case Chlorhexidine, breaking the S-S bonds in salivary proteins, generates SH groups which, interacting with the Fe^{3+} present in the saliva, form yellow/brown precipitates. **With ascorbic acid, the ADS NEW System acts on the Fe^{3+} iron, converting it into Fe^{2+} so that the reaction does not produce ferric sulphides (pigmenting) but ferrous sulphides (non-pigmenting).**



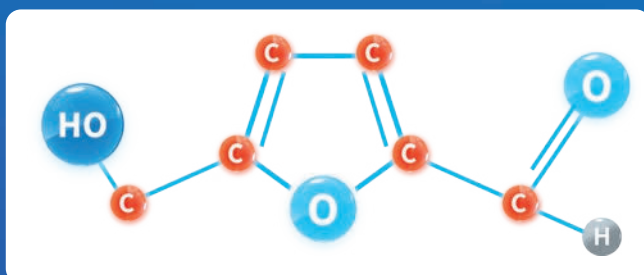
DENATURATION REACTION INTERRUPTED WITH THE INTERVENTION OF THE ADS NEW SYSTEM

HMF WITH NAC REACTION

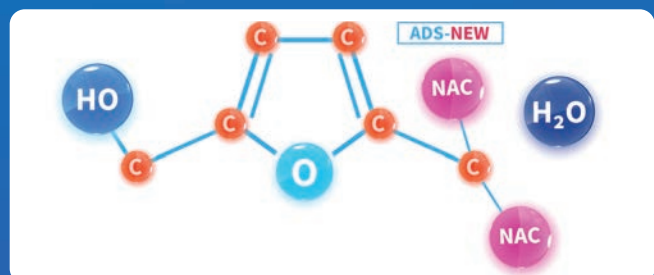
Hydroxymethylfurfural, also known as HMF, is the main culprit for causing pigmentation caused by foods and drinks. This molecule is present in wine, coffee and staining foods, for example.

As it contains NAC, the ADS NEW System reacts with the C=O Carbonyl group of HMF **creating a molecule that does not interact with Chlorhexidine and does not bind to the dental film.**

HMF Hydroxymethylfurfural



HMF with NAC reaction



CURASEPT ADS|DNA PRO LINE

ALCOHOL-FREE

NEW



Curasept ADS | DNA IMPLANT PRO ORAL RINSE

Chlorhexidine 0,20% with ADS NEW + hyaluronic acid + DNA/RNA

Ideal for 7-14 days use.

Thanks to the synergies of its functional ingredients it has a faster antiplaque action, it is adjuvant in the regenerative process of the oral mucosa. Ideal in cases of insertion of dental implants immediate loading procedures, after multiple complex dental extraction, procedure of bone regeneration (bone grafts).

CS-02220 - 200 ml



Curasept ADS | DNA IMPLANT PRO TOOTHPASTE

Chlorhexidine 0,20% with ADS NEW + hyaluronic acid + DNA/RNA

Use 2 times a day for 2 months.

Improves mucosal hydration, rapid antiplaque action.

CS-02259 - 75 ml



Curasept ADS | DNA HYALU PRO GEL

Chlorhexidine 0,50% with ADS NEW + hyaluronic acid + DNA/RNA

Thanks to the presence of Hyaluronic Acid and Sodium DNA it helps repair and moisturise the mucous membranes, especially after dental treatments.

Recommended for: complex tooth extractions, Insertion of dental implants, Bone regeneration procedures, Periodontal aesthetic surgery.

Use at least 2 times a day for 7-10 days.

CS-02255 - 30 ml

Curasept IMPLANT KIT UK VERSION

H 23 x D 9 x L 12.5 cm.

The superior care your patient need.
A synergistic solution pre and after surgery.

Composition:

- 1 Curasept ADS Implant Pro oral rinse, 200 ml
- 1 Curasept surgical toothbrush
- 1 Curasept hyalu pro gel 30 ml
- 1 clutch - assorted colours.



CS-02265 - 30 ml

CURASEPT ADS|DNA PRO LINE

ALCOHOL-FREE

NEW



Curasept ADS | DNA PERIO PRO ORAL RINSE

Chlorhexidine digluconate 0.12% with ADS NEW + hyaluronic acid + DNA/RNA

The healing phase of perio patients is crucial, in fact how the periodontal pockets heal will depend on the other phases. In cases of root planing in the event of gingivitis and periodontitis, laser surgeries, gingival grafts.

Ideal for a 1 month use.

CS-02228 - 200 ml



Curasept ADS | DNA PERIO PRO TOOTHPASTE

Chlorhexidine digluconate 0.12% with ADS NEW + hyaluronic acid + DNA/RNA

Use 2 times a day for 4 months.

Protective in cases of gingivitis and periodontitis. Antiplaque action.

CS-02254 - 75 ml

CURASEPT ADS | DNA HYALU PRO GEL

Chlorhexidine 0,50% with ADS NEW + hyaluronic acid + DNA/RNA

Thanks to the presence of Hyaluronic Acid and Sodium DNA it helps repair and moisturise the mucous membranes, especially after dental treatments.

Recommended for: complex tooth extractions, Insertion of dental implants, Bone regeneration procedures, Periodontal aesthetic surgery.

Use at least 2 times a day for 7-10 days.

CS-02255 - 30 ml



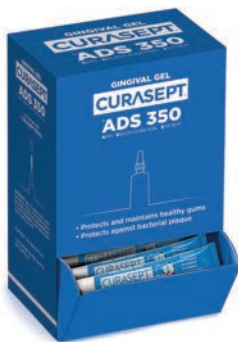
CURASEPT ADS DISPENSER



CS-02267 DISPENSER GEL HYALU PRO 5 ml

50 periodontal gels.

Only for dental practice.
8 x 11.5 x 18 cm



CS-02188 DISPENSER GEL 5 ml

50 periodontal gels.

Only for dental practice.
8 x 11.5 x 18 cm

CURASEPT® PREVENT

PROTECTION AND
PREVENTION LINE
FOR THE MAINTENANCE
OF IMPLANTS



Mucositis
and previous
gingivitis



Smoking



Diabetes
Dry mouth



Immuno-
suppression



Obesity



Cardiovascular
diseases

BEST MAINTENANCE THERAPY FOR
PATIENT WITH RISK FACTORS

CURASEPT PREVENT

CURASEPT
PREVENT

AN INNOVATIVE FORMULATION

POSTBIOTICS

The postbiotic present in the Curasept Prevent line is derived from the **bio-fermentation of lactate** by a strain of *Lactobacillus Paracasei* CNCM I-5220 using a **patented** and reproducible **process** (PBTech®) that allows for obtaining a **mixture of pure postbiotics**: (Bacillus Ferment Extract Filtrate, Hexadecenoic Acid, Oleic Acid, Riboflavin).

The mixtures of metabolites are completely free of microorganisms, whether alive or dead, or fragments thereof, and do not contain the culture broth.

The PBTech® fermentation process is unique because, starting from a specific strain, it allows for obtaining **postbiotics with a precise and reproducible metabolic profile.**

By varying some production steps from the same strain, it is possible to obtain different metabolites that **contribute to maintaining immune homeostasis and protecting mucosal barriers.**

OZONIZED OLIVE OIL

It creates a favorable environment to **maintain the balance of the oral microbiota** and improve the health of gingival tissue and oral mucosa.

STEVIA

Natural sweetener with **anti-caries action.**

PVP/VA

Thanks to its ability to adhere to teeth and oral mucosa, **it creates a protective film that hinders the adhesion and proliferation of bacterial plaque.**

COLOSTRUM

Supports defenses and strengthens gums and oral mucosa.

MELALEUCA OIL

Also known as Tea Tree Oil, it contains a set of **natural substances with antioxidant action.**

PROBIOTIC

An exclusive association of probiotic bacteria.

- ***Bifidobacterium Lactis* HN019**: It has the ability to improve the outcomes of periodontal therapy and rebalance the microbiota.

- ***Kluyveromyces Marxianus* Fragilis B0399**: It is the first non-Saccharomyces yeast approved for probiotic use in human nutrition.

BIOTIN

Biotin is an essential micronutrient belonging to the B vitamin group. **It helps the trophism and good function of the mucous membranes.**

CURASEPT PREVENT

CURASEPT
PREVENT



CS-02451 - 300 ml Bottle / CS 02450 - 75 ml Tube

Curasept Prevent MOUTHWASH - TOOTHPASTE

Rebalances the oral microbiota and improves gingival tissue health even in cases of pre-existing gingival pathologies.

Use twice a day.



CS-02452 - 30 ml Tube

Curasept Prevent GEL

It creates a protective barrier in a target site counteracting the proliferation of the biofilm and bacterial plaque.

Apply 2 - 3 times a day and use in association with Prevent toothpaste.



CS-02456 - 16 chewable tablets

Curasept Prevent PRO & PROBIOTICS FOOD SUPPLEMENT

Rebalances the oral microbiota and improves gingival tissue health, even in cases of pre-existing gum disease.

Ideal for implant wearers, smokers, diabetics, and individuals with dry mouth or compromised immune systems.



CS-02457

Curasept Prevent KIT POSTBIOTICS FOR DAILY GUM HEALTH

Kit contains:

- 1 Curasept Prevent Mouthwash: rinse with 10 ml twice a day;
- 1 Curasept Prevent Toothpaste: apply a pea size and brush twice daily;
- 1 Curasept Softline 0.15 Toothbrush: with soft bristles to ensure an atraumatic cleaning action;
- 1 Pouch.

CURASEPT PREVENT



CLINICAL SITUATION	ACTIVE TREATMENT	MAINTENANCE PHASE			
	CURASEPT DNA ADS	CURASEPT PREVENT			
	Chlorhexidina 0.20	Mouthwash	Toothpaste	Gel ⁽¹⁾	Probiotic ⁽²⁾
IMPLANTOLOGY					
Single Implant	2 TIMES A DAY FOR MAX 15 DAYS	2 TIMES A DAY DAILY		2 TIMES A DAY	1 TABLET A DAY FOR 1 MONTH
Bridge on Implants	2 TIMES A DAY FOR MAX 15 DAYS	2 TIMES A DAY DAILY	2 TIMES A DAY DAILY		1 TABLET A DAY FOR 1 MONTH
Full Fixed Arch on Implants	2 TIMES A DAY FOR MAX 15 DAYS	2 TIMES A DAY DAILY	2 TIMES A DAY	2 TIMES A DAY	1 TABLET A DAY FOR 1 MONTH
Removable Overdenture on Implants	2 TIMES A DAY FOR MAX 15 DAYS	2 TIMES A DAY DAILY		2 TIMES A DAY	1 TABLET A DAY FOR 1 MONTH
Mucositis and Peri-implantitis	2 TIMES A DAY FOR MAX 15 DAYS				
PERIODONTOLOGY					
Gingival Health					1 TABLET A DAY FOR 1 MONTH
Gingivitis and Periodontitis	2 TIMES A DAY FOR MAX 15 DAYS				
Gingivitis and Periodontitis (Successfully Treated)		2 TIMES A DAY DAILY	2 TIMES A DAY DAILY	2 TIMES A DAY	1 TABLET A DAY FOR 1 MONTH
SPECIAL CLINICAL SITUATIONS					
Diabetes, Smokers, Weak Immune System, Systemic Diseases	2 TIMES A DAY FOR MAX 15 DAYS	2 TIMES A DAY DAILY	2 TIMES A DAY DAILY		1 TABLET A DAY FOR 1 MONTH

1) It can be used in addition to the mouthwash in case of localized forms, for greater subgingival action

2) Repeat the cycle every 3-4 months. It is ideal to start therapy immediately after a professional oral hygiene session. The product can nonetheless be used continuously without side effects.

CURASEPT® BIOSMALTO



THINK

REMINERALISATION

CURASEPT[®]

BIOSMALTO

A UNIQUE APPROACH

3 PATENTS



3 FUNCTIONAL SUBSTANCES

● BIOMIMETIC ACTIVITY

The functional substances contained in Curasept Biosmalto have chemical, physical, morphological and mechanical properties similar to the naturally occurring biological structures (enamel and dentine). In a physiological environment, these substances can stimulate processes, such as remineralisation, that are similar to those occurring in the presence of a natural biological tissue.

● BIOCOMPATIBILITY

Curasept Biosmalto is used for a specific biomedical application without causing toxic effects on the biological system.

● BIOACTIVITY

Curasept Biosmalto is capable of interacting chemically with dental hard tissues, by depositing a new mineral phase in continuity with the existing one.

CURASEPT[®]

BIO SMALTO

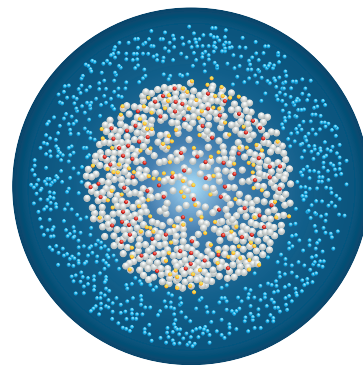
IMPACT ACTION MOUSSE

CHARACTERISTICS OF THE FUNCTIONAL SUBSTANCES

F-ACP ●●●●●●●● COMPLEX[®]

BIO-INSPIRED TECHNOLOGY

Citrate outer layer nanoparticle of amorphous calcium phosphate enriched with carbonate and fluoride.



- Amorphous Calcium Phosphate
- Citrate
- Carbonate
- Fluoride

AMORPHOUS CALCIUM PHOSPHATE (ACP) PHASE

functionalised with Fluoride and Carbonate, coated with Citrate.

Amorphous Calcium Phosphate (ACP) phase functionalised with Fluoride and Carbonate, coated with Citrate.

Amorphous Calcium Phosphate (ACP) is a non-crystalline, highly reactive material **THAT IS RAPIDLY CONVERTED** into hydroxyapatite: it is the natural precursor of enamel and dentine.



CITRATE

is essential for maintaining healthy and strong teeth. It covers F-ACP particles externally, stabilises the complex, and makes it more biomimetic.



CARBONATE

increases the complex solubility and the bioavailability of the active ions: Calcium, Phosphate and Fluoride.



FLUORIDE

is present in free form within the complex. It contributes to the formation of Fluorapatite.

CURASEPT BIOSMALTO

Mousse

CURASEPT
BIOSMALTO



CE*

CS-02366 - 150 ml

Sensitive Teeth IMPACT ACTION MOUSSE PROFESSIONAL USE

F-ACP ●●●●●●●●
COMPLEX®



Amorphous Calcium Phosphate phase - ACP - functionalised with Fluoride, Carbonate coated with Citrate and Potassium Salts.

Quickly reduces pain, occludes the dentinal tubules, protects against sensitivity over time and quickly re-mineralises enamel and dentin.

- All Fruits flavour

1450 ppm F⁻



CE*

CS-02374

1 mousse 150 ml
+ Large and Medium dental trays (10+10 pcs.)

Sensitive Teeth KIT STUDIO PROFESSIONAL USE



Contains
1: 150 ml mousse, 1: protocol of use, 10: large dental trays and 10: medium dental trays.

- All Fruits flavour



CE*

CS-02363 - 50 ml

Sensitive Teeth IMPACT ACTION MOUSSE HOMECARE

F-ACP ●●●●●●●●
COMPLEX®



Amorphous Calcium Phosphate phase - ACP - functionalised with Fluoride, Carbonate coated with Citrate and Potassium Salts.

It is indicated for patients with sensitivity in acute severe phase. It can be prescribed as continuation of the professional treatment or even without treatment in the office, in combination with a toothpaste of the line.

- All Fruits flavour

1450 ppm F⁻

*Medical Devices CE Read warnings and instructions for use carefully.

CURASEPT BIOSMALTO

CURASEPT
BIOSMALTO

Mousse



CE*

CS 02365 / CS 02364 - 150 ml

Caries, Abrasion & Erosion IMPACT ACTION MOUSSE PROFESSIONAL USE

F-ACP ●●●●●●●●
COMPLEX®



Amorphous Calcium Phosphate phase - ACP - functionalised with Fluoride, Carbonate coated with Citrate.

For frequent cavities, high wear of teeth surfaces and dry mouth. It re-mineralises the enamel and increases resistance to acid, mechanical and bacterial attacks. Post orthodontic and whitening treatments. Adjuvant in the treatment of white spots and MIH.

- Flavours: Delicate Mint, Strawberry 1450 ppm F⁻



CE*

CS-02372 / CS-02373

1 mousse 150 ml
+ Large and Medium dental trays (10+10 pcs.)

Caries, Abrasion & Erosion KIT STUDIO PROFESSIONAL USE



Contains
1: 150 ml mousse, 1: protocol of use, 10: large dental trays and 10: medium dental trays.

- Flavours: Delicate Mint, Strawberry



CE*

CS-02361 / CS-02362 - 50 ml

Caries, Abrasion & Erosion IMPACT ACTION MOUSSE HOMECARE

F-ACP ●●●●●●●●
COMPLEX®



Amorphous Calcium Phosphate phase - ACP - functionalised with Fluoride, Carbonate coated with Citrate.

It is indicated for patients with heightened de-mineralisation. It can be prescribed as continuation of the professional treatment or even without treatment in the office, in combination with a toothpaste of the line.

- Flavours: Delicate Mint, Strawberry 1450 ppm F⁻

CURASEPT[®]

BIOISMALTO

MOUTHWASHES & TOOTHPASTES

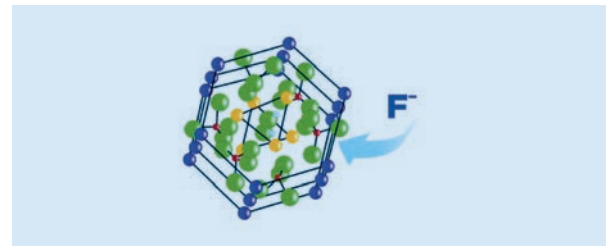
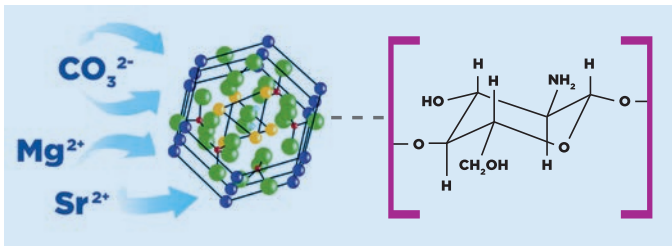
CHARACTERISTICS OF THE FUNCTIONAL SUBSTANCES



Hydroxyapatite partially substituted and conjugated with Chitosan



Hydroxyapatite partially substituted and conjugated with Chitosan + Fluoride



BIOMIMETIC TECHNOLOGY:

Mixture of biomimetic HYDROXYAPATITES

- Partially Magnesium-, Strontium-, Carbonate-substituted Hydroxyapatite CONJUGATED WITH CHITOSAN.
- Partially Fluoride-substituted Hydroxyapatite.

Chitosan affinity with enamel facilitates the release of active ions directly to the surfaces of the teeth.



CARBONATE

Can make active ions bioavailable.



MAGNESIUM

Promotes nucleation.



STRONTIUM

Stabilises the newly-formed mineral phase.



CHITOSAN

Prolongs the release of the active components.



FLUORIDE

Strengthens the newly-formed mineral phase.

SENSITIVITY'S DAYS ARE NUMBERED. REMINERALISES WITH LONG-LASTING RESULTS



- BIOMIMETIC REMINERALISING ACTIVITY.
- PROLONGED DESENSITISING ACTION.
- 3 PATENTS AND 24 CLINICAL STUDIES.

CURASEPT[®] BIOSMALTO SENSITIVE TEETH LINE

Several clinical studies certify that the **CURASEPT BIOSMALTO Sensitive Teeth line**, thanks to its patented formulation containing partially-substituted Hydroxyapatites and Potassium salts, **occludes the dentinal tubules from the very first use** resulting in an almost immediate reduction in sensitivity. It has also demonstrated a **long-lasting remineralisation** of the tooth surfaces and prolonged resistance to acid attacks.



SCIENCE NEVER LIES

Scan the QR code and register with the extra content section. You will be able to consult the Biosmalto clinical folder with the relevant scientific studies.



curaseptworldwide.com

Sensitive Teeth

CURASEPT
BIOSMALTO

Curasept Biosmalto Sensitive Teeth reduces tooth sensitivity rapidly and it creates a new mineral phase that is more resistant to acid attacks and occludes exposed dentinal tubules.

It remineralises enamel and dentine. It occludes the dentinal tubules, rapidly reducing the sensitivity and pain.

**WITH
POTASSIUM
SALTS**



CE*

CS-02354 - 300 ml

Curasept Biosmalto Sensitive Teeth MOUTHWASH



Hydroxyapatite partially substituted and conjugated with Chitosan + Fluorohydroxyapatite and Potassium Salts.

250 ppm F⁻



CE*

CS-02370 - 75 ml

Curasept Biosmalto Sensitive Teeth TOOTHPASTE



Hydroxyapatite partially substituted and conjugated with Chitosan + Fluorohydroxyapatite and Potassium Salts.

Low abrasivity: < 15

1450 ppm F⁻



CS-07250
Blister 1 pc.

Curasept Biosmalto Sensitive Teeth SENSITIVE TOOTBRUSH

It is especially designed for subjects with dentine sensitivity and delicate gums.

It is the ideal tool to complement BIOSMALTO Sensitive Teeth products.

The conical bristles effectively break down bacterial plaque without traumatising the gums and abrading the enamel.

REMINERALISATION TO THE NTH DEGREE.



- FAST
- LASTING
- PATENTED
- CLINICALLY PROVEN

CURASEPT BIOSMALTO CARIES ABRASION & EROSION LINE

Several international studies confirm that the CURASEPT BIOSMALTO Caries, Abrasion & Erosion line, thanks to its patented formulation containing partially-substituted hydroxyapatites, *“shows enamel and dentin remineralisation from the very first treatments. The surface of the tooth, when observed under a microscope, is seen to be covered by anewly-formed mineral phase of considerable consistency and thickness.”*



SCIENCE NEVER LIES

Scan the QR code and register with the extra content section. You will be able to consult the Biosmalto clinical folder with the relevant scientific studies.



curaseptworldwide.com

Caries Abrasion & Erosion

Curasept Biosmalto Caries Abrasion & Erosion acts strongly on abrasion and erosion damage and creates a new, more resistant mineral phase.

CURASEPT
BIOSMALTO



CE*

CS-02353 - 300 ml

Curasept Biosmalto Caries Abrasion & Erosion MOUTHWASH



Hydroxyapatite partially substituted and conjugated with Chitosan + Fluorohydroxyapatite.

250 ppm F⁻



CE*

CS-02350 - 75 ml

Curasept Biosmalto Caries Abrasion & Erosion TOOTHPASTE



Hydroxyapatite partially substituted and conjugated with Chitosan + Fluorohydroxyapatite.

1450 ppm F⁻



CS-07251
Blister 1 pc.

Curasept Biosmalto Caries Abrasion & Erosion PROTECTION TOOTHBRUSH

It is recommended to use together with BIOSMALTO Caries Abrasion & Erosion products. It has a reduced-size head and soft, thin and flexible bristles that offer highly effective plaque removal already at the first step, without abrading the enamel.



CS-02408
16 chewable tablets

Curasept Biosmalto PROBIOTICS FOOD SUPPLEMENT

Pro- and postbiotics, B-group vitamins, Vitamins D and C. Calcium-based

Vitamins C, A, B12, B6, D, folic acid, zinc, and selenium contribute to the normal function of the immune system. Vitamin D contributes to the maintenance of normal teeth. Take one or two tablets a day, to be dissolved in the mouth after daily oral hygiene. Evening intake is preferred.

Curasept Biosmalto

Caries Abrasion & Erosion

6 MONTHS-12 YEARS

CURASEPT
BIOSMALTO

Oral hygiene is paramount from the eruption of the first tooth. Using suitable toothpastes and toothbrushes. Especially from six months to six years, fluoroprophylaxis must be carried out using toothpastes containing at least one thousand parts per million of fluoride (1,000 ppm).

Professionals recommend brushing your teeth at least twice a day with a pea-size amount of fluoride. After the age of six, dentists in Italy recommend at least 1,000 ppm quantity of fluoride twice a day with a "classic" dose of toothpaste. Every toothpaste has an RDA index (Relative Dentin Abrasivity). Professionals recommend using a toothpaste with a low rate RDA (lower than 50) so as not to damage enamel.



CE*

CS-02305 - 50 ml

Caries Abrasion & Erosion

BABY-KID (6 months-6 years)

TOOTHPASTE WITHOUT FLUORIDE



Flow RDA abrasiveness: <30.

For children taking Fluoride Tablets.

- Strawberry flavour

WITHOUT FLUORIDE



CE*

CS-02306 / CS-02307 - 50 ml

Caries Abrasion & Erosion

BABY-KID (6 months-6 years)

TOOTHPASTE



Flow RDA abrasiveness: <30.

Prevents tooth decay for milk teeth.
Guarantees healthy permanent teeth.
Protects and remineralises enamel and dentin.
Protects against acid erosion and abrasion.

- Flavours: Delicate Mint, Strawberry

1000 ppm F⁻



CE*

CS-07252 - 75 ml

Caries Abrasion & Erosion

JUNIOR (7-12 years)

TOOTHPASTE



Flow RDA abrasiveness: <30.

Prevents caries and inhibits the formation of plaque deposits on permanent teeth. Protects and remineralises the hard tissues of newly erupted teeth. Protects against acid erosion and abrasion. Prevents dentin sensitivity.

- All Fruits flavour

1450 ppm F⁻

Sensitive Teeth

CURASEPT
BIOSMALTO



CLINICAL SITUATION	IMPACT ACTION MOUSSE	TOOTHPASTE	MOUTHWASH
DENTAL SENSITIVITY 	ACUTE SENSITIVITY		
	twice a day for at least 30 days	twice a day	
MODERATE SENSITIVITY			
	twice a day	twice a day	
BLEACHING TREATMENT 	ACUTE SENSITIVITY		
	twice a day until hypersensitivity disappears	twice a day until hypersensitivity disappears	
MODERATE SENSITIVITY			
		twice a day	twice a day
MOLAR INCISOR HYPOMINERALISATION (MIH) 	POSTERUPTIVE PHASE		
	2 to 5 times a day until the next visit	twice a day	
MAINTENANCE PHASE			
	twice a day for cycles of 30 days, after dental follow-up	twice a day	twice a day
EROSION AND ABRASION WITH EXPOSURE OF DENTIN OR ROOTS 			
	twice a day for cycles of 30/60 days, after dental follow-up	twice a day	twice a day
GUM RECESSIONS 	ACUTE SENSITIVITY		
	twice a day for up to 30 days	twice a day	
MODERATE SENSITIVITY			
		twice a day	twice a day

Caries Abrasion & Erosion

CURASEPT
BIOSMALTO



CLINICAL SITUATION	IMPACT ACTION MOUSSE	TOOTHPASTE	MOUTHWASH
HIGH CARIES SUSCEPTIBILITY 	 2 to 5 times a day until the next follow up	 twice a day	 twice a day
ORTHO TREATMENT 	 twice a day for 30-day cycles	 twice a day	 twice a day
WHITE SPOTS 	ACTIVE LESIONS (OPAQUE AND POROUS SURFACE)		
	 2 to 5 times / day until the next follow up	 twice a day	 twice a day
	INACTIVE LESIONS (SHINY AND SMOOTH SURFACE)		
	 twice a day for cycles of 30 days, after dental recalls	 twice a day	 twice a day
DENTAL EROSION AND ABRASION 	 twice a day	 twice a day	 twice a day
FLUOROSIS 	ACUTE PHASE		
	 twice a day for cycles of 60-90 days, after dental recalls	 twice a day	 twice a day
	MAINTENANCE PHASE		
	 twice a day for at least 30 days	 twice a day	 twice a day

ULCERS AND LESIONS OF THE ORAL MUCOSA?



RAPID RELIEF, RAPID HEALING TIME.

It forms a
lipidic-protective
film on the lesion.

It provides immediate
RELIEF

It stimulates cellular
RESTORATION

It speeds
HEALING time

Scan to watch
the video



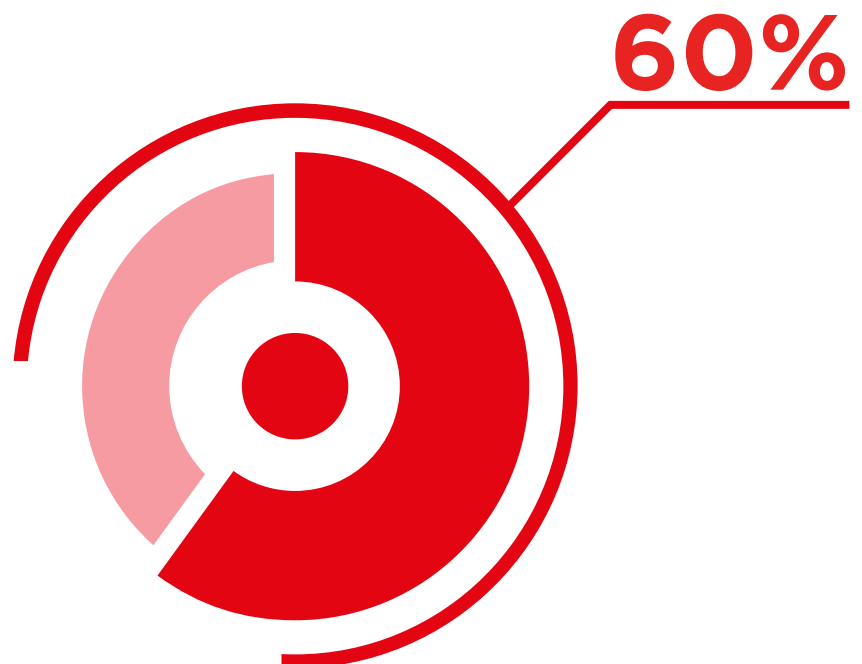
MOUTH ULCERS: AN UNPLEASANT ISSUE

Aphthous ulcers are the most common lesions of the oral mucosa and in 80% of cases the first mouth ulcer appears before the age of 30.



This widespread issue affects up to **60%* of the population.**

It is estimated that in one fifth of cases, occurrences are frequent and recurring over the years.



*S Jurge 1, R Kuffer, C Scully, S R Porter
Mucosal Disease Series. Number VI.
Recurrent Aphthous Stomatitis
Review Oral Dis , 12 (1), 1-21 Jan 2006

CURASEPT AFTERAPID

CURASEPT
AFTERAPID

Formula based on the emulsion of mucoadhesive polymers enriched by unique active ingredients: BIOMOIST (hyaluronic acid), tea tree oil, Manuka oil, 18 beta glycyrrhetic acid, ruscogenin, DNA/RNA, allantoin.

THE BENEFITS:



Relieves pain, protects, and moisturises the lesion.



It does not alter the perception of flavours.



Vegan-Friendly formula.



Speeds up healing.



Alcohol-free, does not burn and does not irritate.



Effective from the first use.



Curasept Afterapid MOUTHWASH

Ideal for widespread action in case of multiple lesions and recurring mouth ulcers. Use in combination with the Gel is recommended to enhance the action.

Patented emulsion.

CE*

CS-04101 - 125 ml



Curasept Afterapid PROTECTIVE GEL

Ideal for local action in the presence of single or small mouth ulcers.

CE*

CS-04100 - 10 ml



Curasept Afterapid SPRAY

Ideal for targeted action in hard-to-reach areas. Use in combination with the Gel is recommended to enhance the action.

Patented emulsion.

CE*

CS-04102 - 15 ml

WE GIVE THE RIGHT IMPORTANCE TO MECHANICAL THERAPY

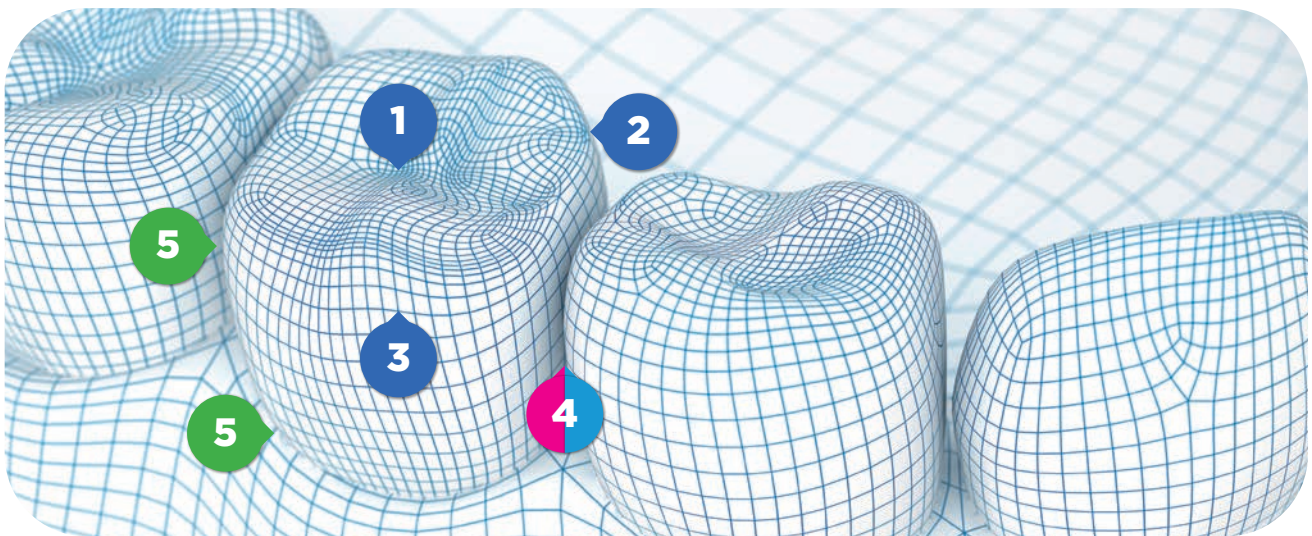


The integration of the toothbrush, interdental brush, and floss, in association with toothpaste and mouthwash, is fundamental for obtaining the best therapeutic result.

THE TOOTHBRUSH IS THE 1ST TOOL FOR THE CARE OF GINGIVITIS AND PERIODONTITIS.

The 3RD EFP international guidelines on periodontitis and peri-implantitis highlight that the **TOOTHBRUSH is the 1ST TOOL** for the removal of supragingival plaque.

INTERDENTAL BRUSH and **FLOSS** are equally **INDISPENSABLE** tools for the therapeutic treatment of gingivitis and periodontitis.



TOOTHBRUSH

Effectively cleans three tooth surfaces:

- ① masticatory
- ② lingual/palatal
- ③ vestibular

INTERDENTAL BRUSH

Gently and effectively cleans:

- ④ interdental spaces and surfaces

PICKS

Remove superficial plaque and food debris:

- ④ interdental spaces and surfaces

INTERDENTAL FLOSS

Effectively cleans:

- ⑤ gingival sulcus and contact points

PERIODONTAL TREATMENT: THE CORRECT COMBINATION OPTIMIZES THE RESULT

TOOTHBRUSHES	INDICATIONS	CHEMICAL HYGIENE COMBINATION
 <p>CURASEPT SOFTLINE 0.10</p>	<p>Indicated in case of SEVERE GINGIVAL INFLAMMATION with presence of spontaneous bleeding. Also to be used after the Surgical toothbrush in the post-surgery healing phase.</p>	 <p>CURASEPT ADS DNA INTENSIVE TREATMENT 0.20** + PRO LINE</p>
 <p>CURASEPT SOFTLINE 0.12</p>	<p>Indicated in case of MODERATE GINGIVAL INFLAMMATION with possible bleeding during brushing.</p>	 <p>CURASEPT ADS DNA INTENSIVE TREATMENT 0.20** + PRO LINE</p>
 <p>CURASEPT SOFTLINE 0.15</p>	<p>Indicated in case of MILD GINGIVAL INFLAMMATION.</p>	 <p>CURASEPT ADS DNA CHLORHEXIDINE 0.12**-0.05</p>
 <p>CURASEPT SOFTLINE 0.17</p>	<p>Indicated in case of GUM PROBLEMS IN THE RESOLUTION PHASE and/or for the maintenance of acquired oral health.</p>	 <p>CURASEPT ADS DNA CHLORHEXIDINE 0.05 - CURASEPT PREVENT</p>

CURASEPT SOFTLINE

CURASEPT
SOFTLINE



CS-07219

Blister:
1 pc.
2 pcs.

Curasept Softline 0.10 - TOOTHBRUSH

Short and anatomical head with 5,100 polyester bristles Ø 0.10 extremely thin, flexible, soft and compact.

Indicated in case of **severe gingival inflammation** with presence of spontaneous bleeding.



CS-07220

Blister:
1 pc.
2 pcs.

Curasept Softline 0.12 - TOOTHBRUSH

Short and anatomical head with 3,700 polyester bristles Ø 0.12 very thin, flexible and soft.

Indicated in case of **moderate gingival inflammation** with possible bleeding during brushing.



CS-07221

Blister:
1 pc.
2 pcs.

Curasept Softline 0.15 - TOOTHBRUSH

Short and anatomical head with 2,700 polyester bristles Ø 0.15 thin and flexible.

Indicated in case of **mild gingival inflammation**.



CS-07222

Blister:
1 pc.
2 pcs.

Curasept Softline 0.17 - TOOTHBRUSH

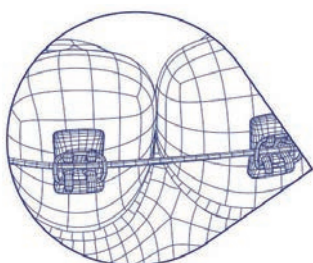
Short and anatomical head 1.700 with polyester bristles Ø 0.17 of medium softness.

Indicated in case of **gingival problem under resolution** and/or for the maintenance of the state of acquired oral health.

CURASEPT[®]

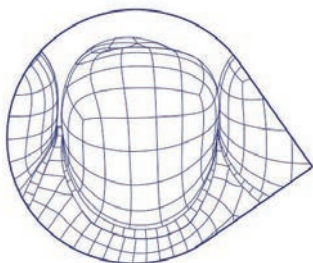
SPECIALIST

CURASEPT SPECIALIST TOOTHBRUSHES are designed to give a targeted response to special situations and problems.



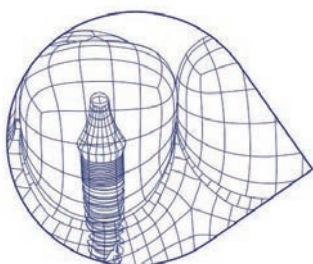
ORTHO

In the presence of fixed orthodontic appliances.



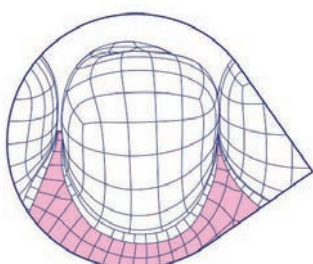
MONO TUFT

For particularly large interdental spaces, prosthetic rehabilitations, malposition of tooth elements, and surfaces with deep erosions.



IMPLANT

In the presence of complex prosthetic rehabilitations, in particular on dental implants.



SURGICAL

For oral hygiene in the very first days after surgery or in the presence of gingival lesions.

CURASEPT SPECIALIST

CURASEPT
SPECIALIST



CS-07214
Blister 1 pc.

Curasept Specialist ORTHO - TOOTHBRUSH

It was designed to allow thorough oral hygiene in the presence of **orthodontic appliances**. The bristles are entirely covered by soft particles that make the surface irregular, and help achieving an effective cleaning without damaging the enamel. The **“V” profile** cut of the bristles is designed to optimize cleaning. The shorter central rows **act on attachments, wires, bands and anchorages**. The longer outer rows clean the surface of the teeth.

Available in 3 colours:



CS-07215
CS-07216
Blister 1 pc.

Curasept Specialist MONO TUFT - TOOTHBRUSH

SHORT and LONG Mono Tuft brushes differ in bristle lengths. Both brushes have a single circular tuft with a conical shape, consisting of soft and flexible bristles. The inclination of the head, the ergonomic handle and the gentleness of the bristles make them the ideal tools in specific situations such as:

- Oral hygiene in the presence of implants, bridges and orthodontic appliances;
- Hygiene of hard-to-reach areas;
- Cleaning of gingival sulcus;
- Cleaning of isolated teeth.

- SHORT - LONG



CS-07217
Blister 1 pc.

Curasept Specialist IMPLANT - TOOTHBRUSH

Thanks to its particular shape, the ergonomic handle and the flexible, soft bristles, the IMPLANT toothbrush is the ideal tool for the HYGIENE OF IMPLANT-SUPPORTED PROSTHESES. The high quality of the materials prevents damages to the surfaces of implants and prostheses.



CS-07218
Blister 1 pc.

Curasept Specialist SURGICAL - TOOTHBRUSH

The SURGICAL toothbrush is particularly indicated after surgery or implantology, periodontal treatments, heightened sensitivity due to injury and exposed root surfaces. It has a narrower head than the standard heads. Thanks to its small size and the anatomical shape, allows easier access to the less accessible points of the teeth, acting in a specific way without causing trauma. Extremely soft bristles with a diameter of 0.06 are specially indicated for a gentle and atraumatic cleansing.

Available in 2 colours:



CURASEPT® PICKS

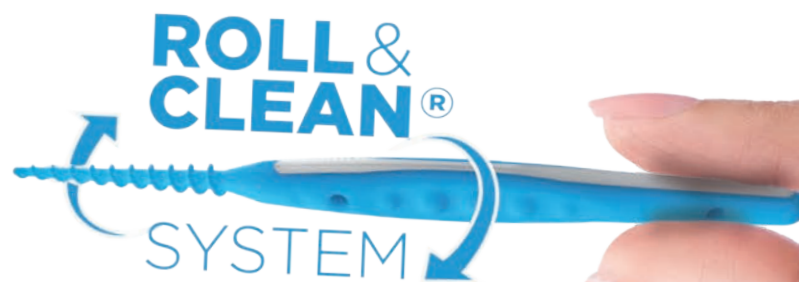
We have redesigned
interdental hygiene



CURASEPT PICKS

**CURASEPT
PICKS**

A REVOLUTIONISED CONCEPT OF INTERDENTAL CLEANING THANKS TO THE **UNIQUE PATENTED SPIRAL** FOR INTERDENTAL CLEANING.



Curasept PICKS effectively eliminates plaque and food remnants between teeth using the Roll&Clean® rotational movement with superior effectiveness*



Curasept PICKS greater durability allows for cleaning every spot with a single brush/pick



The Curasept PICKS features a soft rubber coating for superior softness.

*In vitro test performed comparing Curasept Picks with other rubber interdental brushes without a spiral. Data on file.



CS-07547

CS-07548

CS-07549

CURASEPT[®] PROXI

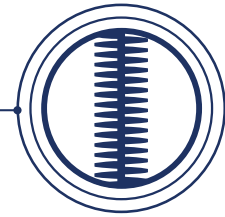
SOFT, DELICATE, CLEAN,
FOR YOUR PATIENT AND YOUR PEACE OF MIND.
100% EFFECTIVE



CURASEPT PROXI

CURASEPT
PROXI**SAFE**
FOR MANY REASONS

The metal core
is coated to protect the
enamel and any implants.



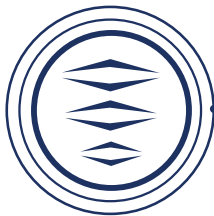
The ultra-flexible bristles
adapt perfectly to spaces ensuring
effective cleaning.



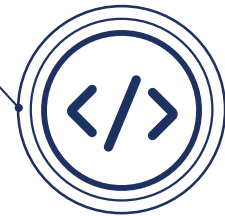
The Safe Stop System sheath
prevents gum trauma.



The locking system
holds the core preventing
any release.



The ergonomic handle
for a better grip and to make
movements easier.



The code
on the handle identifies the size
to simplify repurchase.



CURASEPT PROXI

CURASEPT
PROXI

BLISTER PACKS



The Curasept Proxi interdental brushes feature renewed graphic design and a new package for the “straight interdental brush” range.

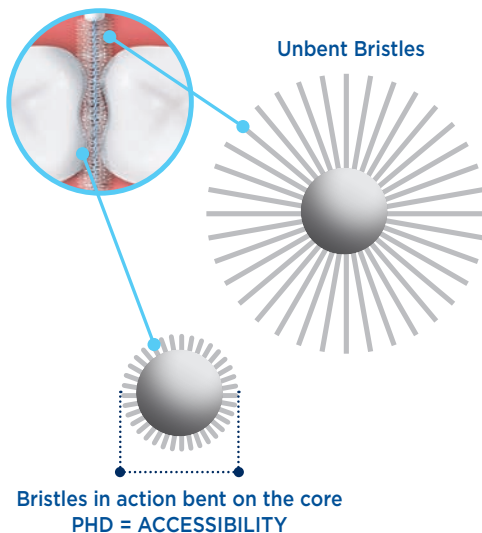


The new **6 PIECES** blister pack can be easily separated in **2 sections:** plastic front and paper back.

This makes it **easier to open** the package and obviously **HELPS WITH PROPER SEPARATE DISPOSAL.**



The 6 interdental brushes are inserted in a **base in recycled material** which acts as **handy holder**. It can in fact be placed anywhere and holds the brushes upright, separate from one another and from any surfaces, thus **ASSURING THE UTMOST HYGIENE AND CONVENIENCE OF USE.**



ONE SIZE FOR EVERY SPACE.
PHD = ACCESSIBILITY

Passage Hole Diameter is the measurement defined by the standard ISO 16409 which determines the minimum diameter size through which it can pass an interdental brush.

CURASEPT PROXI

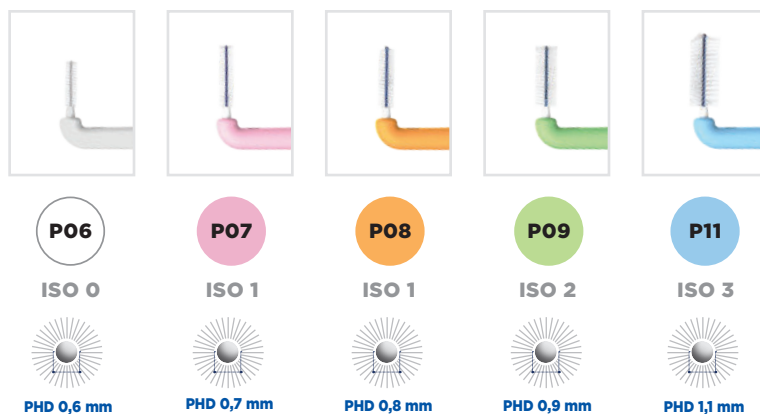
Prevention

CURASEPT
PROXI

Indicated for narrow interdental spaces and in the presence of healthy gums.

The Prevention Line is made up of 5 references that range from the thinnest ISO 0 (0.6 mm) to ISO 3 (1.1 mm).

The same measures are also available in the ANGLE version.



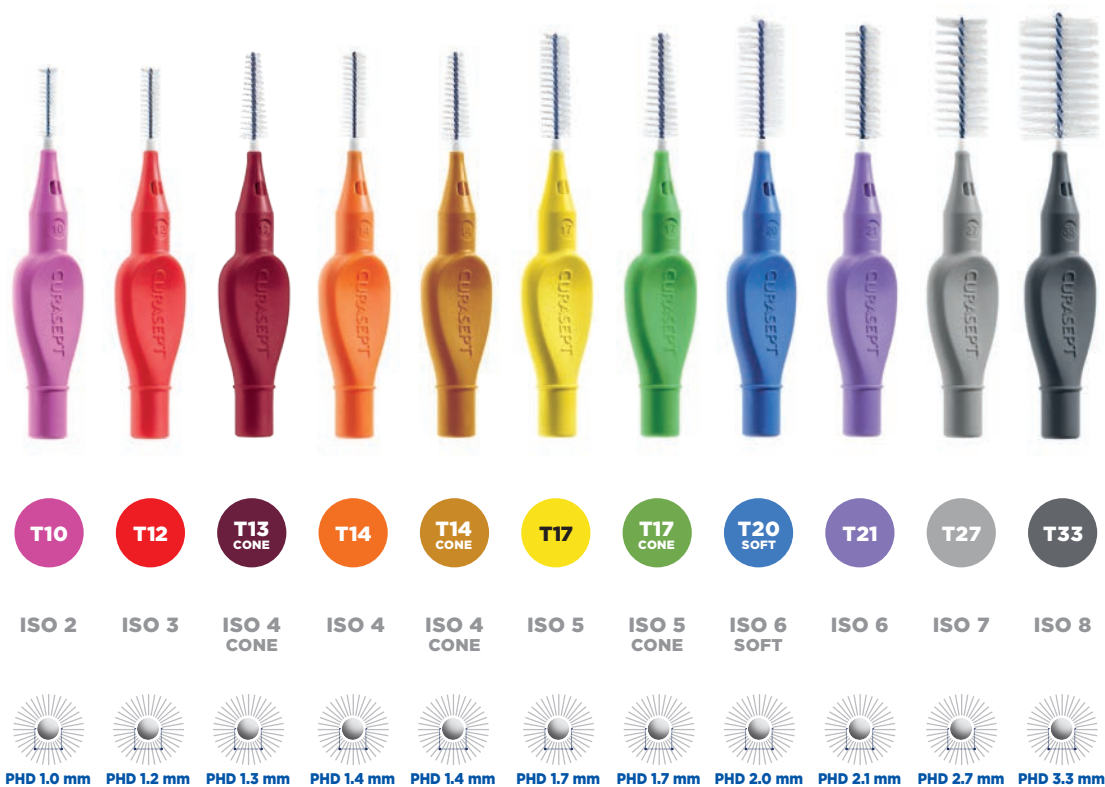
CURASEPT PROXI Treatment



Indicated for larger interdental spaces resulting from gum problems, dental malposition or dental treatments.

Ideal for orthodontic, periodontal patients, with implants.

In the classic version there are 11 sizes ranging from ISO 2 (1 mm) to ISO 8 (3.3 mm). Also available in ANGLE the version up to ISO 5 conical.



CURASEPT PROXI Kit

CURASEPT
PROXI


CS-07527 / CS-07514 - Blister 5 pcs.

Curasept Proxi MIX PREVENTION

Contains 5 different sizes of the Prevention line to find the suitable size for different interdental spaces.

P06

P07

P08

P09

P11



CS-08210 - 1 Kit Professional

Curasept Proxi PROFESSIONAL KIT

An essential tool in a dental office for storing the interdental brushes to be tested on patients. The Kit has 12 compartments to store the necessary products to be tested on patients. If you wish to keep it in a drawer, you can remove the cover.

Curasept Proxi REFILL BOX

The interdental brushes are also available in convenient packs of 25.



CS-07600 / CS-07624 - Box 25 pcs.

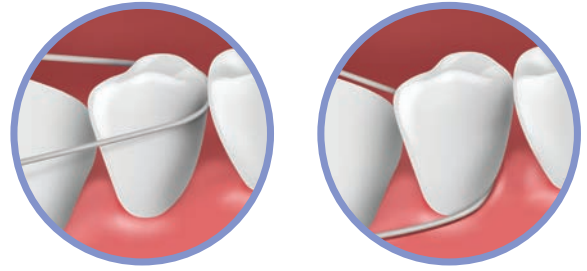
CS-07600 - CS-07601 - CS-07602 - CS-07603
 CS-07604 - CS-07605 - CS-07606 - CS-07607
 CS-07608 - CS-07609 - CS-07610 - CS-07611
 CS-07612 - CS-07613 - CS-07615 - CS-07616
 CS-07617 - CS-07618 - CS-07619 - CS-07620
 CS-07621 - CS-07622 - CS-07623 - CS-07624

CURASEPT FLOSSLINE

Dental Flosses

CURASEPT
FLOSSLINE

Dental floss should be used in addition to the toothbrush and the interdental brush to remove the bacterial plaque from the contact points and the gingival sulcus, and from the narrower gaps that even the smallest interdental brush is unable to reach.



PERFECTO



CS-07142

Professional Floss is equipped with an ultra-rigid thread and a soft spongy section.

At the contact with saliva and dental surfaces, the wire guide does not bend facilitating insertion between the teeth, while the spongy part expands adapting perfectly to interdental spaces.

The porosity of the microfibre guarantees greater plaque removal and optimal cleaning while still being delicate on the gums. The shell shaped dispenser combines practicality, hygiene and portability.



CURASEPT FLOSSLINE

Dental Flosses

CURASEPT
FLOSSLINE



Curasept TAPE DENTAL FLOSS

It does not shred, and ensures optimum sliding properties. This flat section floss facilitates the insertion into narrow interdental spaces.

CS-07136 - Dispenser 35 m



Curasept PTFE DENTAL FLOSS

It is made of a high-resistant material that does not shred, and ensures optimum sliding properties. Due to its particular cleaning action, it is indicated for narrow interdental spaces and for people who use a floss for the first time.

CS-07137 - Dispenser 35 m



Curasept CLASSIC DENTAL FLOSS

It is coated with a special microcrystalline wax that allows for easier sliding between the teeth, and ensures an effective cleaning action thanks to an easier insertion into the interdental spaces.

- Mint flavour

CS-07138 - Dispenser 50 m



Curasept ULTRAFINE DENTAL FLOSS

It consists of over 100 compact microfilaments that guarantee greater resistance, elasticity, and effective cleaning of interdental spaces.

CS-07139 - Dispenser 50 m

CURASEPT FLOSSLINE

Dental Flosses

CURASEPT
FLOSSLINE



Curasept BLACK DENTAL FLOSS

It is flat, made of polyester, and coated with a special microcrystalline wax that allows for easier sliding between the teeth, increases dental floss resistance, and facilitates the insertion into the interdental spaces. The black colour makes plaque and residues more visible when removed, and allows better control of the cleaning action.

- Mint flavour

CS-07140 - Dispenser 50 m



Curasept EXPANDING DENTAL FLOSS

Thanks to the contact with the dental surfaces during its use, the floss expands and adapts perfectly to the interdental spaces.

The greater volume of the floss resulting from the expansion of the microfibres allows better hygiene while remaining gentle on gums. The porosity of the microfibres ensures more effective plaque removal.

- Mint flavour

CS-07141 - Dispenser 30 m

CURASEPT PROTECTION BOOSTER

COMPLETE AND PROLONGED
PROTECTION EVERY DAY **AGAINST**
HALITOSIS, PLAQUE, AND BACTERIA.



ANTI-HALITOSIS

Essential Oils: Menthol, Eucalyptol, Thymol, Cardamom, Methyl Salicylate



ANTIBACTERIAL

CPC (Cetylpyridinium Chloride)



ENAMEL STRENGTHENING
NaF (Sodium Fluoride)



DEFENSE AGAINST STAINS

Iceland Moss



ENAMEL AND GUM PROTECTION

Alcohol, SLS, and SLES-Free

ORAL HEALTH, GENERAL WELL-BEING.

curasept.com

CURASEPT DAYCARE PROTECTION BOOSTER

Boost your daily oral care.

CURASEPT
DAYCARE
PROTECTION **BOOSTER**



4 toothpastes to boost your daily oral routine.

A NEW PATENT:

- CPC-HAP (Cetylpyridinium Chloride + Hydroxyapatite);
- NaF (Sodium Fluoride);
- Essential Oils:
Menthol, Eucalyptol, Thymol, Methyl Salicylate.

SLS FREE

BENEFITS:

- Fight caries and gum disturbances
- Fight halitosis
- Remineralized action
- Prolonged hygiene action.



Curasept Daycare PROTECTION BOOSTER TOOTHPASTE

Daily use

NaF: 900 ppm.

- 3 flavours available:
Frozen Mint
Fruit Sensation
Herbal Invasion

CS-03508 / CS-03509 / CS-03510 - 75 ml



Curasept Daycare PROTECTION BOOSTER JUNIOR TOOTHPASTE

Daily use

A specific solution for kids without essential oils.
NaF: 250 ppm.

For kids 7-14yrs old: twice a day

- Flavour:
Bubble Gum

CS-03511 - 50 ml



4 mouthwashes to increase the efficacy of the toothpastes.

UNIQUE FORMULA:

- CPC (Cetylpyridinium Chloride) hygiene action;
- NaF (Sodium Fluoride) remineralising action;
- Essential Oils:
Menthol, Eucalyptol, Thymol, Methyl Salicylate.
Anti-halitosis action.

ALCOHOL FREE and SLS FREE.
No mucous irritation.



Curasept Daycare **PROTECTION BOOSTER** MOUTHWASHES

Daily use

NaF: 220 ppm.

- 3 flavours available:
Frozen Mint
Fruit Sensation
Herbal Invasion

CS-02550 - CS-02551 - CS-02552

100 ml, 250 ml, 500 ml

Curasept Daycare **PROTECTION BOOSTER** JUNIOR MOUTHWASH - 7-12 YEARS

Daily use

A specific solution for kids without essential oils.

NaF: 250 ppm.

- Flavour:
Bubble Gum



CS-02561 - 100 ml, 250 ml

CURASEPT[®]

LUXURY WHITENING



CURASEPT LUXURY WHITENING

Advanced whitening technology

CURASEPT
LUXURY
WHITENING



CS-05723
Toothpaste 75 ml

Curasept Luxury Whitening DIAMOND LUX

Whitening toothpaste. An exclusive formulation with Diamond Powder, Peroxydone, and Substituted Hydroxyapatite for a unique whitening action. A white, bright, and healthy smile and an anti-aging action for the enamel and gum protection, thanks to the presence of Hyaluronic Acid.

Available in 75 ml packaging.

Bright Mint flavour.

RDA 76 - 1450 ppm F⁻



CS-05714
Toothpaste 75 ml
Toothpaste 75 ml + Toothbrush

Curasept Luxury Whitening BLACK LUX

Toothpaste with Bioactive Carbon, Multisubstituted Hydroxyapatite Conjugated with Chitosan, PVP-Hydrogen Peroxide complex and Carbamide Peroxide.

Toothbrush: the bristles are treated with activated carbon.

Available in the following packs:

- Toothbrush + 75 ml Toothpaste Kit
- 75 ml Toothpaste Refill.

Intense Mint flavour.

RDA 70 - 1450 ppm F⁻



CS-05716
Toothpaste 75 ml
Toothpaste 75 ml + Toothbrush

Curasept Luxury Whitening GOLD LUX

Toothpaste with gold and silver micro-pearls, Carbamide Peroxide, PVP-Hydrogen Peroxide complex and Multisubstituted Hydroxyapatite Conjugated with Chitosan.

Toothbrush: the bristles are treated with activated carbon.

Available in the following packs:

- Toothbrush + 75 ml Toothpaste Kit
- 75 ml Toothpaste Refill.

Fresh Mint flavour.

RDA 60 - 1450 ppm F⁻



CS-05772

Curasept Luxury Whitening SPECIAL EDITION

Curasept Luxury Gold Lux - CS 05773

1 Vanity pouch of your choice in black or gold. 1 Gold Lux whitening toothpaste with gold and silver micro pearls, Carbamide Peroxide, Peroxydone, substituted Hydroxyapatite conjugated with Chitosan. 1 Toothbrush with bristles treated with activated Carbon.

CURASEPT®

WHITENING



**Carbamide Peroxide,
Essential Oils
and Phytic Acid**



**PVP Hydrogen
Peroxide and
Micronised Silicas**



**Bristles with
Calcium Carbonate
and Microrelief**

CURASEPT WHITENING

Whiteners for home use

CURASEPT
WHITENING

Curasept Whitening is the line of **home dental whiteners** consisting of mouthwash, toothpaste and toothbrush indicated for **maintaining the results obtained with the professional treatment carried out in the dentist's office.**

The use of the products **synergistically** makes the most of the substances they contain, so as to **contribute to the removal of stains** that undermine the beauty of the smile.



CS-05721 - 300 ml

Curasept Whitening MOUTHWASH

It is recommended for those who, in addition to proper oral hygiene, want to maintain the natural whiteness of their teeth. **Carbamide Peroxide** acts effectively on teeth discolouration with a long-lasting effect. Phytic Acid maintains whitening because it acts as a calcium chelating agent, the Essential Oils provide significant benefits for complete protection and perform an anti-plaque and anti-halitosis action.



CS-05720 - 75 ml

Curasept Whitening TOOTHPASTE

A formula based on **PVP-Hydrogen Peroxide**, effective against external enamel discolouration. The micronised silicas act gently on the enamel and help remove surface stains. The combination of two Fluorine Salts, Fluoride and Sodium Monofluorophosphate, carries out a re-mineralising action and increases the natural structural resistance to caries.



CS-05722
Blister 1 pc.

Curasept Whitening TOOTHBRUSH

DUAL BRISTLE TECHNOLOGY.

The **Calcium Carbonate** contained in the middle bristles contributes to the removal of plaque and extrinsic enamel stains.

The **Microrelief** makes the surface of the side bristles uneven, enhancing the cleaning and whitening action.

Available in 4 colours:



FIRST BECAUSE WE CARE



Best Dental Trading
8203 Fauske Boks 704
www.bestdental.no
bestdental@bestdental.no tel.: 75 64 65 66



-  [curasept_official](#)
-  [CuraseptWorldwide](#)
-  [curasept-s-p-a](#)
-  [@curasept-official](#)
-  [@curasept_official](#)