

my e3 
w3

Say goodbye to the complexities of traditional oral care systems.

Say hello to a personalized, effective, and straightforward approach that delivers A Perfect Smile to All.

It's time for a new standard, featuring a new, holistic understanding of oral hygiene, bio-active care, cutting-edge contact brushing and profound non-contact cleaning technologies.



edel
white

*Simplicity and Inclusion,
that just works.*

*Join us on our way with
edel+white!*

The new way of Oral Care.

THE SUPERIOR CLEANING POWER OF HYDRODYNAMIC WAVES AND ULTRA-SOFT BRISTLES

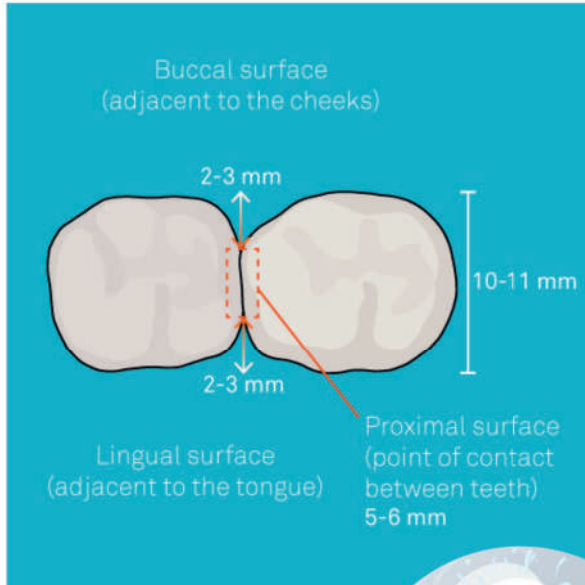


Brush Wars: Electric vs. Manual Toothbrush Showdown



	Hydrodynamic sonic toothbrush	Oscillating toothbrush	Regular sonic toothbrush	Manual toothbrush
Head shape	Dual clean	Traditionally round	Traditionally oval	Traditionally oval
Movements per minute	31,000-45,000	2,500-8,000	20,000-31,000	300-400
Motion	High frequency High amplitude	Low frequency No amplitude	Med-high frequency Low amplitude	Frequency dependent on user
Cleaning action	Non-contact cleaning (hydrodynamic effect)	Mechanical cleaning (only where the bristles touch)	Primarily mechanical cleaning (only where the bristles touch)	Mechanical cleaning (only where the bristles touch)

The power of intensive surface cleaning and hydrodynamic deep cleansing



01

Intensive Surface Cleaning:

Contact cleaning is the mechanical brushing of teeth by bristles. This is unquestionably the most important part of an oral care routine, as thorough mechanical cleaning is required for sufficient disruption of bacterial plaque.

02

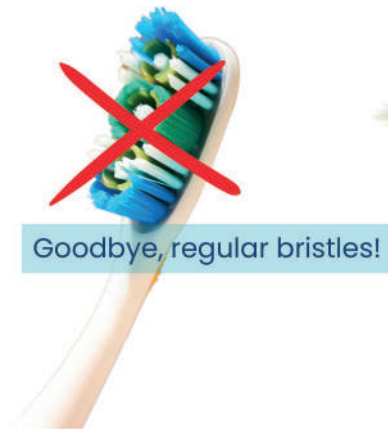
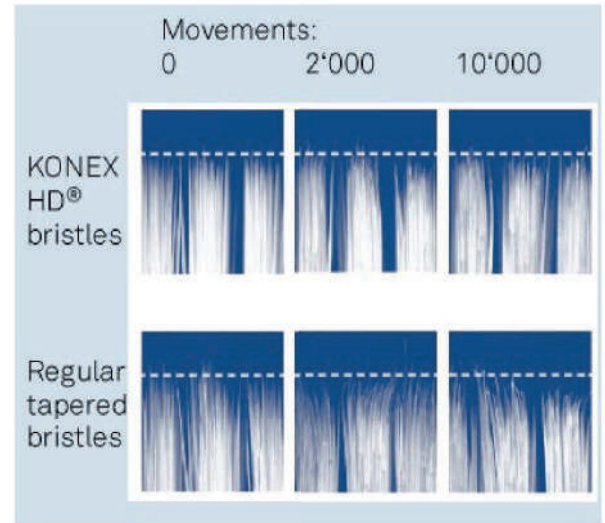
Hydrodynamic Deep Cleansing: (Hydrodynamic power)

Non-contact cleaning results from extraordinarily strong movements, generated by the brush engine. These pulsating currents of fluid extend beyond the tips of the bristles by 2-3 mm and push their way between teeth and beneath the gumline. As a result, bacteria and residual food are wiped away from areas inaccessible to normal toothbrushes.

Better performance than regular bristles: Konex HD®

The tapered shape of these bristles imparts stability at the base and flexibility in the tip. This helps adapt to the surfaces of the teeth, hugging their curves and establishing more intimate contact than conventional bristles can achieve.

Just as cat's whiskers help a cat to navigate the world and avoid danger, our Konex HD® bristles navigate your teeth and avoid damage.



5X as durable
8X as thin

Hello, Konex!



The Swiss Army Knife of oral care!

Four expert, patented-bristle brush heads and four masterful cleaning modes make Swiss edel+white Health Suite your lifelong partner for better health.

THIS IS THE CURRENT GOLD STANDARD OF ORAL CARE

More than a toothbrush

Promotes oral care, healthcare and self-care for overall well-being with a Detox Yoga mode.

Best performance

Best performance: highest efficacy of non-contact cleaning confirmed by a published scientific study.



THIS IS THE CURRENT GOLD STANDARD OF ORAL CARE

In the Sonic Generation Health Suite 8+'s package you get all that is in this image, PLUS:



- Complete oral care via three pillars:
 1. Contact cleaning
 2. Non-contact cleaning
 3. Yoga Detox mode

The confidence of having made the best decision for your oral health

A tool that will support your health with quality, functionality and ease

Adapt the brush head to fit your personal needs

FOUR BRUSH HEADS

- Dual clean: boost efficiency by cleaning two teeth at once.
- Target: the pin-pointed single tuft of bristles easily slides between the teeth for interdental cleaning.
- Focus: the bristles effortlessly adapt to the contours of each tooth.
- Whitening: the patented polishing brush with embedded rubber balls gently erases stains.



FOUR MODES

- Sensitive: gentle cleaning for sensitive teeth and irritated gums.
- Active: thorough plaque removal all around teeth and gums.
- Whitening: natural tooth whitening by removing tough stains.
- Yoga: extends oral care to self-care. It uses the three minutes of brushing time to easily incorporate breathing training into your daily routine.

All-in-one means all you need

- Slim All-in-One Dental Device and multifunctional wonder!
- Contact and Non-Contact Cleaning: Say hello to comprehensive cleanliness! Health Suite combines both contact and non-contact cleaning methods.
- Specialized Brush Heads: Customize your routine with a broad range of specialized brush heads, each designed to meet different dental needs.
- Scientifically Proven non-contact cleaning
- Yoga Mode: It's not just oral care; it's self-care! Activate Yoga mode for a soothing, mindful brushing experience.
- Konex HD Bristles: Precision meets durability! Our three brush heads feature Konex HD bristles – 8x thinner and 5x more durable than conventional bristles.
- Whitening Power: Brighten up! A dedicated whitening brush head for a radiant smile.
- CleanCurl 3D Compatibility: Switch it up!
- Long-Term Availability: Replacement brush heads are available for a whole decade.



Scan the QR code
and skip the
reading – let the
video do the talking!



summing-up



Mix and match the brush head to your needs

THREE BRUSH HEADS

- Dual Clean: boost efficiency by cleaning two teeth at once.
- Target: the pin-pointed single tuft of bristles easily slides between the teeth for interdental cleaning.
- Focus: the bristles effortlessly adapt to the contours of each tooth.



FOUR MODES

- Sensitive: gentle cleaning for sensitive teeth and tender gums.
- Active: thorough plaque removal all around teeth and gums.
- Whitening: natural tooth whitening by removing tough stains.
- Massage: gentle pulses massage and stimulate gums, making them less susceptible to inflammation

Brush heads for the World's best sonic toothbrushes



Dual Clean
Ultrasoft Airbag
Brush Heads



Whitening
Brush Heads



Focus®
Brush Heads



CleanCurl 3D
Brush Heads



Bacterio Target® &
Focus® Brush Heads

TIPS & TRICKS

OUR SONIC TOOTHBRUSHES

Quadrant Timer: Did you know that our mouth is actually divided into four quadrants to make sure we clean all parts of our teeth thoroughly? Your toothbrush will let you know when it's time to move on to the next quadrant. How cool is that?



Aim the bristles towards your gum line to make sure they're reaching around your gums and between your teeth.

You don't have to scrub in circles or move up and down like with a manual toothbrush. Just glide the sonic toothbrush gently back and forth over your teeth and gums, spending about 3-5 seconds on each tooth.

Yoga mode is all about using **breathing to help you relax**. For the first four seconds, start brushing and slowly (!) inhale through your nose. Then, for the next four seconds, pause your brushing and hold your breath. Finally, for the last eight seconds, keep brushing the quadrant surface and gently exhale through your nose.

TIPS & TRICKS

OUR SONIC TOOTHBRUSHES

The sonic toothbrushes have a **travel mode** to prevent them from accidentally turning on while you're on a trip. Just long-press the start button to activate it.

Clean the toothbrush with lukewarm water to get rid of any toothpaste leftovers. Make sure to clean the handle regularly with hand soap and warm water, and then dry it with a soft towel.

For those whose smiles are delicate masterpieces, Sensitive Mode is a gentle whisper of care. Whether you bear the weight of **exposed roots** or the grace of **veneers**, or you are a **beginner** to sonic toothbrushing, let this mode cradle your dental artistry.

The sonic toothbrushes can be **charged** from any PC, power bank or smartphone adapter with a USB cable.

GROUNDBREAKING



Supporting WHO's 2023-2030 goals to 'promote and safeguard equitable access to oral health professional education to increase [...] disability diversity and cultural competency of the oral health workforce'.

INTRODUCING




A revolutionary innovation by edel+white that promises to transform the daily brushing routine of many!



REDEFINING
TOOTHBRUSHING

INCLUSIVE DESIGN

 + 300%
performance!

The Clean Curl 3D toothbrush boasts three-dimensional bristles that clean every tooth surface simultaneously, offering a 300% increase in cleaning performance.



Brush like on
rails! 

Click the brush head onto your teeth, and the brush moves like a train. **Never skip a tooth or miss a side!**

One of the
world's most
inclusive
toothbrushes



Toothbrushing can be a challenge to many. Clean Curl is their preferred choice. It gives all the advantages of a special, enhanced design with a regular price tag!

A GAME-CHANGER FOR MANY



Elderly people with a weak or limited grip who want to regain independence



Children who lack technique and often brush their teeth unsupervised



High risk groups like teenagers who spend little time brushing



Mentally and physically disabled patients who need assistance



Care homes...

LET'S EMPOWER PEOPLE

Inner short bristles

The inner bristles are shorter and reach perfectly the chewing surface of the teeth

Outer curved bristles

The black outer bristles are curved and clean the outer and the inner surfaces of the teeth, as well as the gums

Thumb support

Helps keep fingers in place for precise brushing

Cleaning the gum margins

Its ultra-soft bristles are gentle on your gums, ensuring a comfortable brushing experience while providing a deep clean that reaches every nook and cranny.

Looped volume handle

If the user brushes with too much pressure, the loop closes to relieve tension in the wrist. It also makes it easier for those with limited dexterity to grip



Available in four colours



A winning combination

For those who prefer to use sonic toothbrushes, here is a winning combination: excellent cleaning with three sides of bristles + hydrodynamic power. Discover the CleanCurl 3D brush head!



Brush head for edel+white's sonic toothbrushes!



*One package comes with two CleanCurl 3D brush heads in two colours

Seamless Brushing: Ideal for All Ages and Diverse Needs

- Faster brushing without giving up on efficiency
- (3 x more efficient, brushes three sides at the same time)
- Especially recommended for bridges, implants and braces
- Great support for elderly care and people with special needs
- Also a good choice for young people who don't spend enough time brushing teeth
- Proven excellent gum cleaning
- Easy to hold thanks to the looped handle

Scan the QR code
and skip the
reading – let the
video do the talking!



TIPS & TRICKS

FOR OUR TOOTHBRUSHES

When brushing, angle the toothbrush at 45° so you can better clean the gum line. If you're using CleanCurl 3D, which already cleans the gum line, angling the toothbrush helps bristles reach deep pockets.

Brushing stronger doesn't mean brushing better. Putting too much pressure when you brush your teeth can damage the teeth and the gums, possibly leading to gum recession and enamel damage - which can result in sensitivity.

For the **time-crunched brushers**, try using the CleanCurl 3D. It helps you reach all the surfaces of your teeth! Not only does it clean your teeth, but it also moves like on rails in search of all those lost molars. So, whether you're in a hurry or just want to level up your dental game, the CleanCurl 3D has your back (and your incisors)

Toothbrush Survival Guide

The Three-Month Rule: Your toothbrush is like a VIP guest at a fancy party—it's got a shelf life! Every two to three months, it's time for a toothbrush makeover. Swap that old bristle buddy for a fresh one.

DISCOVER TOOTHPASTES THAT TRULY MAKE A DIFFERENCE



We use the best bioavailable fluoride

At Swiss Dental Experts, we are committed to promoting excellent oral health by incorporating **bioavailable sodium fluoride** in all our products. This special ingredient aligns with the WHO's Global Oral Health Action Plan (2023-2030), emphasizing the importance of maintaining optimal fluoride levels for a healthy smile.

Unlike other toothpaste brands, we prioritize the bioavailability of fluoride over sheer quantity.





It's not just about having more fluoride in a product; what truly matters is how effectively it can be absorbed by your teeth.


While some toothpaste formulations may hinder fluoride bonding with teeth, we ensure that our formula allows for easy absorption and maximum protection of your teeth. Choose Swiss Dental Experts for superior oral care and experience the difference firsthand.



World Health Organization

Fluoride
Fluoride strengthens teeth and reduces your risk of cavities. Specifically, fluoride:

 Remineralizes your tooth enamel.	 Reverses early tooth decay.
 Slows down the process of demineralization.	 Prevents the growth of cavity-causing bacteria.

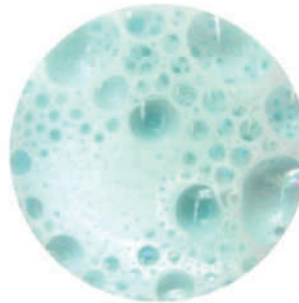
 Cleveland Clinic

Foaming is important, and we will tell you why



regular
high-foaming
toothpaste

- Can lead to less time and care dedicated to brushing
- Potentially causes gum irritation
- Large bubbles disturb the delivery of the toothpaste ingredients to interdental spaces



edel+white
compact-foaming
toothpaste

- Increases attentiveness while toothbrushing
- Doesn't irritate the gums
- Eases the delivery of toothpaste ingredients to interdental spaces
- More compatible with electric toothbrushes



Meet the ingredients our toothpastes DON'T have

We make sure that we do not add any unnecessary nasties. Our toothpastes don't have:

- ✗ Parabens: these preservatives have been linked to hormone disruption and have raised concerns regarding their safety.
- ✗ Titanium dioxide: concerns have been raised about the safety of nanoparticles, particularly in other products, due to their potential to penetrate tissues and organs.
- ✗ SLS (sodium lauryl sulfate): may irritate gums, and some studies have raised concerns about potential links to cancer, although this is still being debated.
- ✗ Peroxide: a bleaching agent that can be harsh on teeth and may not be necessary for everyone.
- ✗ Microplastics: tiny plastic particles that harm the environment and pollute waterways.
- ✗ Harsh abrasives: while whitening, they can scratch tooth enamel, increasing sensitivity.

JUST SAY STOP!

STOP Sensitive toothgel

Bioactive protection!

This exceptional tooth gel creates a protective shield that is harder and more acid resistant than competing toothpastes.



No more pain!

It promotes instant and long-lasting relief of sensitivity, having cumulative results for a life without pain!

Goodbye tooth decay!

STOP Sensitivity administers a low-level of fluoride at a constant rate over a 12-hour period for ongoing protection.

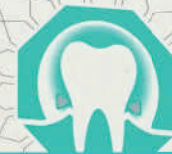


RELIEVE+SHIELD

PROTECTION IMMÉDIATE, BIOACTIVE, PERMANENTE
PROTEZIONE IMMEDIATA, BIOATTIVA, PERMANENTE
PROTEÇÃO IMEDIATA, BIOATIVA, PERMANENTE

NEW

0% ULTRA REFRESCANTE SEM SLS, PARABENOS,
SACARINA SÓDICA, OU DIÓXIDO DE TITÂNIO

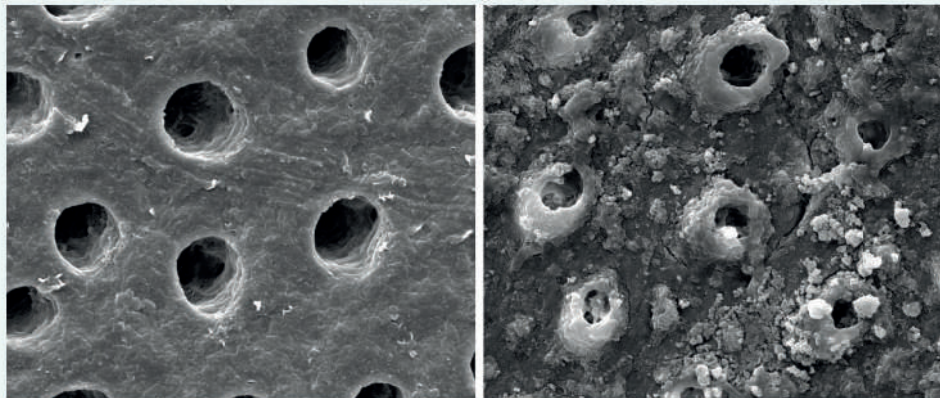


Feel the difference in one month!

edel

Meet BioMin: instant bioactive protection. Forever.

In this toothpaste we use BioMin technology, which is designed to adhere to the teeth, continuously releasing a low, controlled amount of calcium, fluoride and phosphate ions over 12 hours. These then work within the saliva to produce fluorapatite, depositing it on the tooth's surface and inside the tiny dentinal tubules. Therefore, the relief in sensitivity is long-lasting and cumulative.



Dentinal tubules before brushing with BioMin toothpaste

Dentinal tubules after brushing with BioMin toothpaste

Shield and shine: advanced enamel defense

Calcium fluoro phosphosilicate (CFPS) forms the core of STOP Sensitive Toothgel and provides a number of benefits:

- Administers fluoride, calcium and phosphate ions at a slow and steady rate for up to 12 hours
- Replaces the enamel's natural material, hydroxyapatite, with more acid-resistant fluorapatite
- Occludes exposed dentinal tubules for instant and lasting relief from sensitivity



The higher phosphate content and presence of fluoride in CFPS allow the formation of fluorapatite, a material that is harder and 10 x more acid-resistant than hydroxyapatite. This forms a shield to protect teeth not only against future sensitisation, but also against tooth decay.

STOP Sensitive Toothgel also contains sodium fluoride (1430 ppm): the doubled-up dose of fluoride provides a burst during brushing followed by a continued low-level dose for 12 hours!

BioMin powered: stop sensitivity with breakthrough technology

- Promotes immediate and long-term protection of sensitive teeth
- It's a sensitive toothpaste, but it also offers good cleaning of the teeth (RDA 60)
- Has a fresh, pleasant taste
- Patented BioMin (calcium-fluoro-phosphosilicate) shields teeth for up to 12 hours

INCI: GLYCERIN, PEG-8, HYDRATED SILICA, CALCIUM FLUOROPHOSPHO- SILICATE, AROMA, SODIUM LAUROYL SARCOSINATE, CARBOMER, POTASSIUM ACESULFAME, SODIUM FLUORIDE, LIMONENE, CI 42090. **CONTAINS:** Calcium Fluorophosphosilicate & Sodium Fluoride (1430 ppm F).



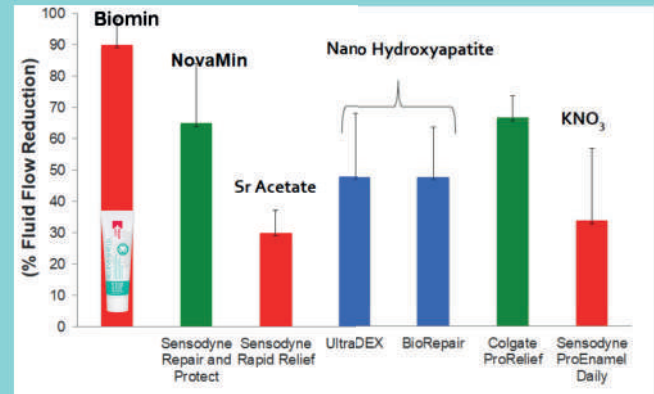
Scan the QR code
and skip the
reading – let the
video do the talking!



Many studies have demonstrated the effectiveness of CPFS in reducing dentin hypersensitivity. They also show that this component not only immediately occludes the dentinal tubules, but also continues to work for hours, providing great relief.

Contact our team for the scientific references that support all STOP Sensitive Toothgel claims.

Tubular occlusion comparison



Courtesy of BioMin Technologies Ltd

FOR A HEALTHY AND WHITE SMILE

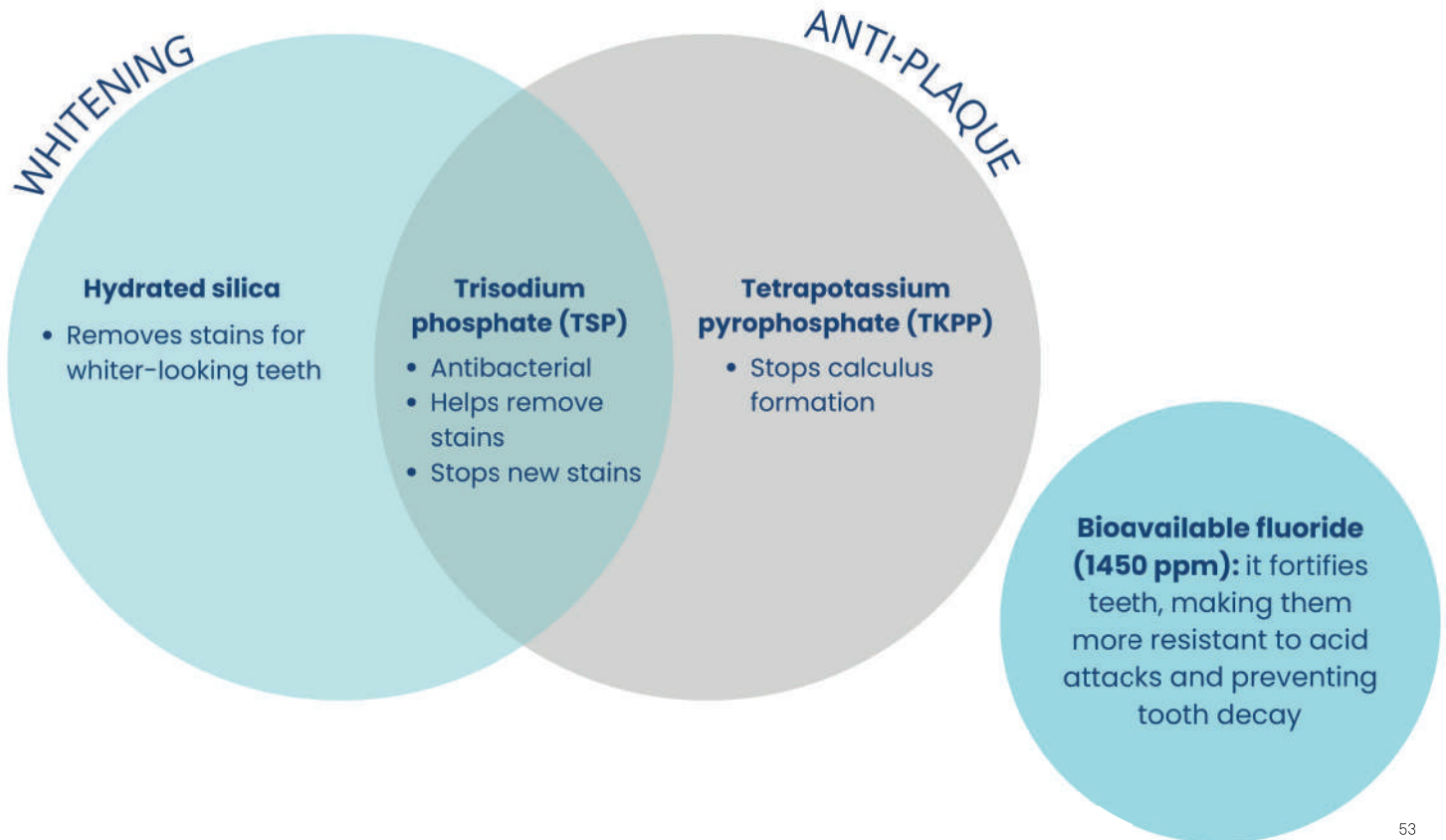
Anti-Plaque + Whitening toothpaste

This dynamic dual action formula removes and prevents plaque build-up, while also fighting stains and maintaining the results of whitening treatments. Anti-Plaque + Whitening contains fluoride and is suitable for daily use. It also has a fresh minty taste that lasts.

*RDA80



Fortified and protected: building stronger, whiter teeth



Gentle whitening and strong protection – this is the toothpaste you need every day

- Dual formula that whitens and protects at the same time
- Despite being a whitening toothpaste, it's perfectly suitable for daily use
- Clean formula that has no parabens, titanium dioxide and SLS
- Vegan and gluten-free

INCI: AQUA, SORBITOL, HYDRATED SILICA, GLYCERIN, TETRAPOTASSIUM PYROPHOSPHATE, PENTYLENE GLYCOL, CELLULOSE GUM, AROMA, SILICA, HYDROXYACETOPHENONE, COCAMIDOPROPYL BETAINE, SODIUM FLUORIDE, SODIUM SACCHARIN, GLYCERYL LAURATE, TRISODIUM PHOSPHATE, SODIUM LAUROYL SARCOSINATE, LIMONENE.RDA: 80.



Scan the QR code
and skip the
reading – let the
video do the talking!



TIPS & TRICKS

OUR AMAZING TOOTHPASTES

Don't Rinse Immediately: After brushing, spit out the excess toothpaste but avoid rinsing your mouth with water right away. This allows the fluoride to stay on your teeth longer for better protection.

You can apply Osmotonic and STOP Sensitivity with the finger or using a Q tip in particular problem zones to alleviate the symptoms.

Amount Matters: A larger pea-sized amount of toothpaste is sufficient for adults, while children below 6 need even less—about the size of a grain of rice.

Choosing toothpaste is like picking a date – you gotta know what you want! Whether it's for sensitive teeth, a whiter smile, or just a good clean, check those ingredients (no nasties allowed!), see if the RDA is declared (if not, just move on!), and make sure it matches your brush. Happy brushing!

MOUTHWASHES THAT GO BEYOND REFRESHING



MEDICAL MOUTH RINSE WITH 0.12% CHLORHEXIDINE AND CPC

STOP Irritation mouthwash

Chlorhexidine 0.12% and 0.05% of cetylpyridinium chloride (CPC) mouthwash offers potent benefits for oral health. Its antimicrobial properties effectively combat plaque and gingivitis, reducing inflammation and promoting gum health. Used as directed, it helps maintain a clean mouth and fresh breath, making it a valuable addition to daily oral hygiene routines.

The dual formula of STOP Irritation supports patients with chronic gingivitis and periodontal disease.

*300 ml





Fights gum disease and freshens breath

- Combination of two active Ingredients for a Healthy Mouth: 0.12% Chlorhexidine Digluconate (CHX) and 0.05% Cetylpyridinium Chloride (CPC)
- CHX fights against various bacteria and fungi, keeping gum disease at bay and promoting oral health. It supports the relief of gingivitis and periodontitis by directly tackling inflammation and breath issues associated with these conditions.
- CHX also helps in mouth infections, ulcers, sore throats, and denture care.
- CPC further enhances periodontal disease prevention and eases related symptoms.
- Minty Freshness: Enjoy a refreshing mint flavour with every use.
- Chemical Transparency: No Parabens or Titanium Dioxide: We keep it clean and simple.
- Alcohol-Free and Fluoride-Free: Because your oral health deserves the best!

Targeted oral health solution with CHX and CPC

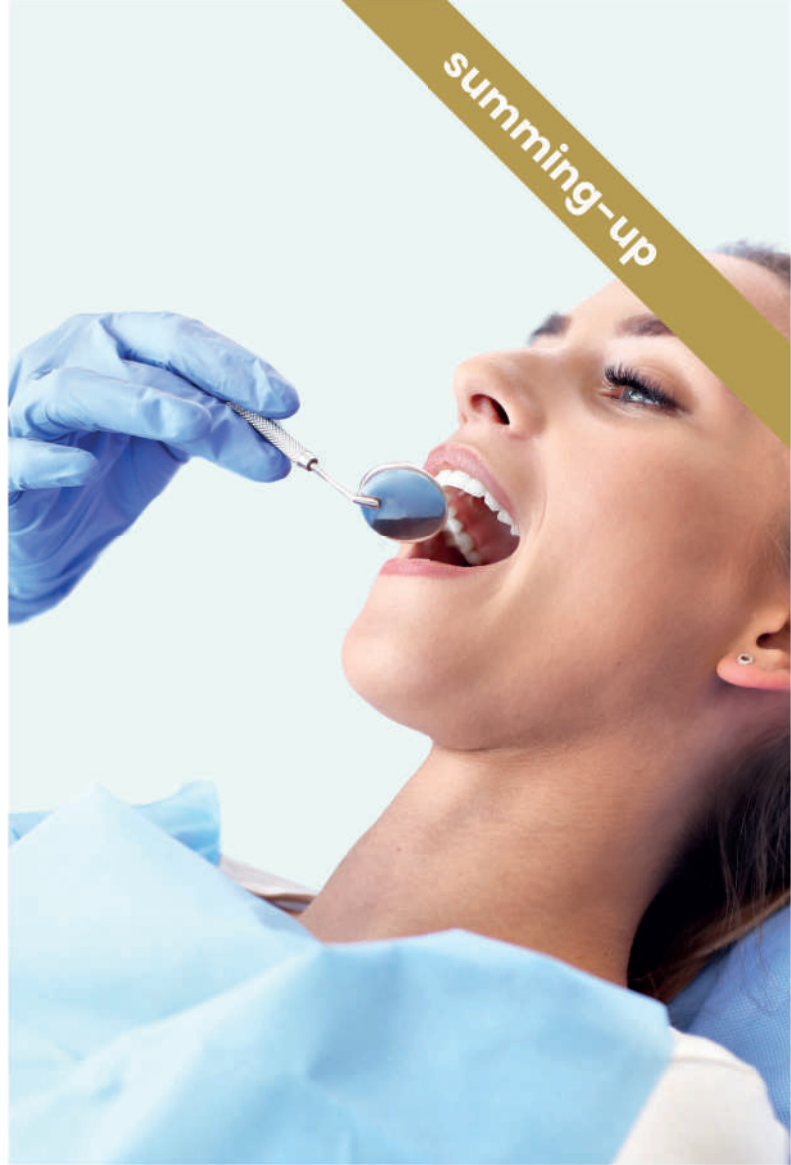
- Anti-microbial and anti-inflammatory
- Supports patients with halitosis, chronic gingivitis and periodontal disease
- Should be used when prescribed by a dental professional
- No alcohol, no fluoride, no parabens, no titanium dioxide

AQUA, GLYCERIN, SORBITOL, PEG-40 HYDROGENATED CASTOR OIL, AROMA, SODIUM BENZOATE, CHLORHEXIDINE DIGLUCONATE, SODIUM SACCHARIN, CETYLPYRIDINIUM CHLORIDE, 2-BROMO-2-NITROPROPANE-1, 3-DIOL, CI 42090, CI 19140.

Scan the QR code
and skip the
reading – let the
video do the talking!



summing-up



TIPS & TRICKS

GREAT MOUTHWASHES

The **right amount** of mouthwash can usually be measured with the cap of the bottle. If your mouthwash doesn't have a measuring cap, keep in mind that normally you should use between 20 and 25 ml.

Using mouthwash **once a day** is enough, but it's ok if you prefer to do it up to two times along with your regular oral care routine.

- **Do not rinse** your mouth after using mouthwash. Simply swish it around, gargle and spit out the contents.
- You can also use your mouthwash with an **oral irrigator** to target specific areas or simply add some freshness to the water flossing routine.

Give preference to **alcohol-free** mouthwash. The ones that contain alcohol not only give a burning sensation and dry the mouth, they also kill all the bacteria - including the good ones, possibly creating an imbalance of bacteria and leading to bad breath.

CORDLESS SPA FOR THE MOUTH

Flosserpik Power Spa

Introducing Power Spa, your compact powerhouse for a healthier smile! Blast away plaque and debris effortlessly, promoting gum health and sparkling teeth. Its waterproof design means you can use it anywhere, even in the shower. Plus, it's mouthwash-compatible, so you can customize your oral care routine for a fresh, invigorating experience. Elevate your oral hygiene game with Power Spa—cleaner teeth, healthier gums, and a refreshing burst every time!



Mix and match the attachments

FOUR TIPS

- UltraSoft Brush: with Konex HD bristles to brush while flossing.
- Jet: ideal for precision cleaning between the teeth.
- Subgingival: deeply cleans the gums of those with gingival and periodontal issues. Use only on sensitive mode, low pressure.
- Tongue cleaning: helps maintain bacterial balance and freshen breath.



FOUR MODES

- Active: high pressure water jet stream.
- Sensitive: gentle water jet stream.
- Pulse: three pulses per second.
- Spot Clean: continuous water jet stream while button is engaged.

SEVEN LEVELS

- Seven levels of adjustable water pressure: 80 to 160 PSI water pressure with over 1500 pulses per minute.



Upgrade your smile routine

- Waterproof - suitable for using in the shower
- Easy-to-open water tank for cleaning
- 180 ml capacity
- Battery: rechargeable Li-ion battery, 30 uses in one full charge
- Unique SPOT Mode for targeted cleaning action only while pushing the button

Compared to alternative interdental cleaning, water flossing offers:

- Greater reduction of plaque in just a single use.
- Greater reduction in gum bleeding.
- Greater improvement of gingivitis.
- Greater improvement in periodontal health.
- Greater reduction in the recurrence of periodontitis.

Effortless maintenance, powerful performance

- Waterproof, so it can be used under the shower
- High pressure and high flow for a powerful yet comfortable experience
- Unique SPOT clean mode for a more targeted cleaning action
- Portable and in an ideal size to be taken on trips
- Easy to clean tank for better maintenance
- Supports the use of mouthwash for an extra boost of freshness or for the administration of medical rinses.



Scan the QR code
and skip the
reading – let the
video do the talking!



Attachments – oral irrigators

Power Spa



- 1 UltraSoft Brush tip
- 1 Jet tip
- 1 Subgingival tip
- 1 Tongue cleaning tip

Pro-Station



- 1 Orthodontic tip
- 1 Jet tip
- 1 Subgingival tip
- 1 Tongue scraper tip

TIPS & TRICKS

OUR WATER FLOSSERS

You can totally use your Power Spa oral irrigator in the shower because it's completely **waterproof**.

Just use the **subgingival tip** if your dentist suggests it and apply light pressure.

- Fill the tank of your water irrigator with **warm water** for a more comfortable experience, but it shouldn't be warmer than 40°C.
- You can also fill it in with **mouthwash** (using a 1:1 ratio of mouthwash to water).

Mouthwashes in edel+white water flossers

Do use these:

Solutions that:

- Are antimicrobial
- Are antiseptic
- Contain chlorhexidine

Don't use these:

Solutions that contain:

- Alcohol
- Essential oils
- Iodine
- Salt

PERFECT FOR BRACES AND BRIDGES

Supersoft Floss

This innovative floss features a thick, spongy middle that contracts to one-tenth of its size when tension is applied, ensuring it fits even the smallest gaps with ease. Pre-cut for your convenience, Supersoft Floss also boasts thinner, stiffened ends that allow you to maneuver around fittings and thread the floss into position effortlessly. It's perfect to clean braces, bridges, and implants.



The versatile dental cleaner

- Easy to thread between teeth and under bridges thanks to the stiffened ends
- Very spongy middle part to effortlessly clean plaque away with ease
- Surface area of 19.6 mm² (70 x thicker than normal floss)
- It comes in 50 pre-cut strands
- Especially recommended for braces, bridges and implants



Scan the QR code
and skip the
reading – let the
video do the talking!



Together we are strong

bestilles i Norge hos: **Best Dental Trading**
bestdental@bestdental.no
tel.: 75 64 65 66