

THE **ONE AND ONLY**  
**FIRST**  
**BECAUSE**  
**WE**  
**DON'T STAIN**

The **ADS System** dramatically reduces dental pigmentation, the most common side effect linked to Chlorhexidine.

- **Without Alcohol**
- **Without SLS**
- **More than 100 studies**

CURASEPT has further perfected the  
A.D.S. (Anti Discoloration System)



# CHLORHEXIDINE + ADS|DNA

## SODIUM DNA:

### What it is:

SODIUM DNA OR PDRN (PolyDeoxyRiboNucleotide) SODIUM SALT, IT IS CONSTITUTED FROM A MIXTURE OF DNA FRAGMENTS WITH MOLECULAR WEIGHT FROM 250 TO 500 KDA.

The mechanism of action of Sodium DNA involves two processes:

### 1 Interaction with A2a adenosine receptors

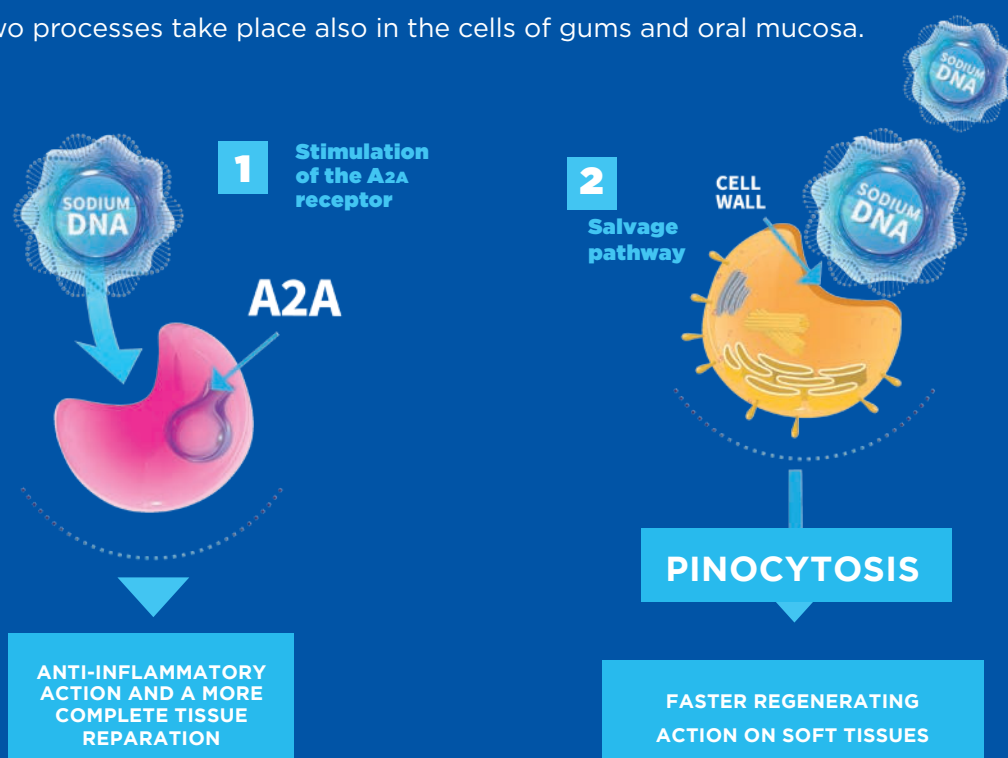
It provides an anti-inflammatory action and modulates multiple cellular inflammatory mediators.

### 2 “Salvage pathway”

Nucleotide salvage pathways are used to recover bases and nucleosides that are formed during degradation of RNA and DNA. Through this pathway the sodium DNA, through, pinocytosis, is internalized into the cell. Then, these polynucleotides are depolymerized into smaller molecules that enter into the nucleus and are used to synthesize other substances for the cell survival and the support of the regenerative processes.

### How it works:

These two processes take place also in the cells of gums and oral mucosa.



**ADS|DNA 220  
INTENSIVE TREATMENT**

Mouthwash\* - Toothpaste  
Chlorhexidine 0.20  
+ PVP-VA + DNA



**ADS|DNA 212  
PROLONGED TREATMENT**

Mouthwash\* - Toothpaste  
Chlorhexidine 0.12  
+ PVP-VA + DNA



**ADS|DNA 205  
PLAQUE AND CARIES  
TREATMENT**

Mouthwash - Toothpaste  
Chlorhexidine 0.05  
+ Fluoride 0.05  
+DNA



\*Medical Device **C€ 0373**. Read warnings and instructions for use carefully.

# CURASEPT ADS | DNA

ALCOHOL-FREE



CE\* 0373

CS-02224 - 200 ml

## CURASEPT ADS | DNA 220 MOUTHWASH\*

*Chlorhexidine digluconate 0.20% with ADS, DNA, PVP-VA*

Intensive treatment of gum and mouth inflammation.



CS-02227 - 75 ml

## CURASEPT ADS | DNA 720 GEL TOOTHPASTE

*Chlorhexidine digluconate 0.20% with ADS, DNA*

Intensive treatment for rapid and effective anti-plaque effect. Preserves natural teeth whiteness.



CE\* 0373

CS-02225 - 200 ml

## CURASEPT ADS | DNA 212 MOUTHWASH\*

*Chlorhexidine digluconate 0.12% with ADS, DNA, PVP-VA*

Prolonged treatment of gums and mouth inflammation.



CS-02231 - 75 ml

## CURASEPT ADS | DNA 712 GEL TOOTHPASTE

*Chlorhexidine digluconate 0.12% with ADS, DNA*

Prolonged treatment for rapid and effective anti-plaque and antibacterial effect. Respects the white colour of teeth.

# CURASEPT ADS | DNA

**ALCOHOL-FREE**

## CURASEPT ADS | DNA 205 MOUTHWASH

*Chlorhexidine digluconate 0.05% with ADS, DNA and Fluoride 0.05%*

Protects gums and dental enamel for daily treatment.

Ideal for ortho patient.

CS-02226 - 200 ml



## CURASEPT ADS | DNA 705 GEL TOOTHPASTE

*Chlorhexidine digluconate 0.05% with ADS, DNA and Sodium Fluoride 0.05%*

Daily plaque and cavity treatment.

Protects gums preserve the natural teeth whiteness.

CS-02232 - 75 ml

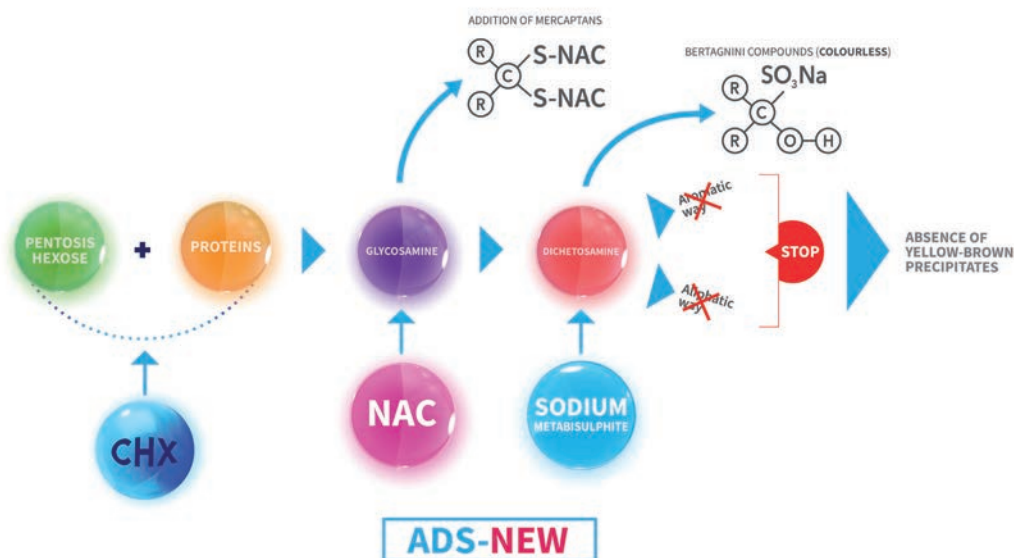
# THE NEW ADS SYSTEM HAS BEEN ENHANCED WITH NAC (N-ACETYLCYCSTEINE)

MAILLARD REACTION INTERRUPTED BY THE INTERVENTION OF THE NEW ADS SYSTEM.

With Sodium Metabisulphite and NAC, the **NEW ADS System interrupts the Maillard reaction** that occurs in the acquired dental film, between glycoproteins and sugars.

If not interrupted, this reaction leads to the formation of melanoidins, i.e. yellow/brown precipitates that pigment the dental surfaces.

## MAILLARD REACTION INTERRUPTED WITH INTERVENTION WITH THE NEW ADS SYSTEM



# CURASEPT ADS|DNA PRO LINE

ALCOHOL-FREE

NEW



## Curasept ADS | DNA IMPLANT PRO ORAL RINSE

*Chlorhexidine 0,20% with ADS NEW + hyaluronic acid + DNA/RNA*

Ideal for 7-14 days use.

Thanks to the synergies of its functional ingredients it has a faster antiplaque action, it is adjuvant in the regenerative process of the oral mucosa. Ideal in cases of insertion of dental implants immediate loading procedures, after multiple complex dental extraction, procedure of bone regeneration (bone grafts).

CS-02220 - 200 ml



## Curasept ADS | DNA IMPLANT PRO TOOTHPASTE

*Chlorhexidine 0,20% with ADS NEW + hyaluronic acid + DNA/RNA*

Use 2 times a day for 2 months.

Improves mucosal hydration, rapid antiplaque action.

CS-02259 - 75 ml



## Curasept ADS | DNA HYALU PRO GEL

*Chlorhexidine 0,50% with ADS NEW + hyaluronic acid + DNA/RNA*

Thanks to the presence of Hyaluronic Acid and Sodium DNA it helps repair and moisturise the mucous membranes, especially after dental treatments.

Recommended for: complex tooth extractions, Insertion of dental implants, Bone regeneration procedures, Periodontal aesthetic surgery.

Use at least 2 times a day for 7-10 days.

CS-02255 - 30 ml

## Curasept IMPLANT KIT UK VERSION

*H 23 x D 9 x L 12.5 cm.*

The superior care your patient need.  
A synergistic solution pre and after surgery.

Composition:

- 1 Curasept ADS Implant Pro oral rinse, 200 ml
- 1 Curasept surgical toothbrush
- 1 Curasept hyalu pro gel 30 ml
- 1 clutch - assorted colours.



CS-02265 - 30 ml

# CURASEPT ADS|DNA PRO LINE

ALCOHOL-FREE

NEW



## Curasept ADS | DNA PERIO PRO ORAL RINSE

*Chlorhexidine digluconate 0.12% with ADS NEW + hyaluronic acid + DNA/RNA*

The healing phase of perio patients is crucial, in fact how the periodontal pockets heal will depend on the other phases. In cases of root planing in the event of gingivitis and periodontitis, laser surgeries, gingival grafts.

Ideal for a 1 month use.

CS-02228 - 200 ml



## Curasept ADS | DNA PERIO PRO TOOTHPASTE

*Chlorhexidine digluconate 0.12% with ADS NEW + hyaluronic acid + DNA/RNA*

Use 2 times a day for 4 months.

Protective in cases of gingivitis and periodontitis. Antiplaque action.

CS-02254 - 75 ml



## CURASEPT ADS | DNA HYALU PRO GEL

*Chlorhexidine 0,50% with ADS NEW + hyaluronic acid + DNA/RNA*

Thanks to the presence of Hyaluronic Acid and Sodium DNA it helps repair and moisturise the mucous membranes, especially after dental treatments.

Recommended for: complex tooth extractions, Insertion of dental implants, Bone regeneration procedures, Periodontal aesthetic surgery.

Use at least 2 times a day for 7-10 days.

CS-02255 - 30 ml

# CURASEPT ADS DISPENSER



## CS-02267 DISPENSER GEL HYALU PRO 5 ml

---

**50 periodontal gels.**

Only for dental practice.  
8 x 11.5 x 18 cm



## CS-02188 DISPENSER GEL 5 ml

---

**50 periodontal gels.**

Only for dental practice.  
8 x 11.5 x 18 cm